

BENYC 2017

Steve Bluestone

Mind the Gaps:
Post-Occupancy Discoveries
From Data and Operational
Perspectives.....

.....or,

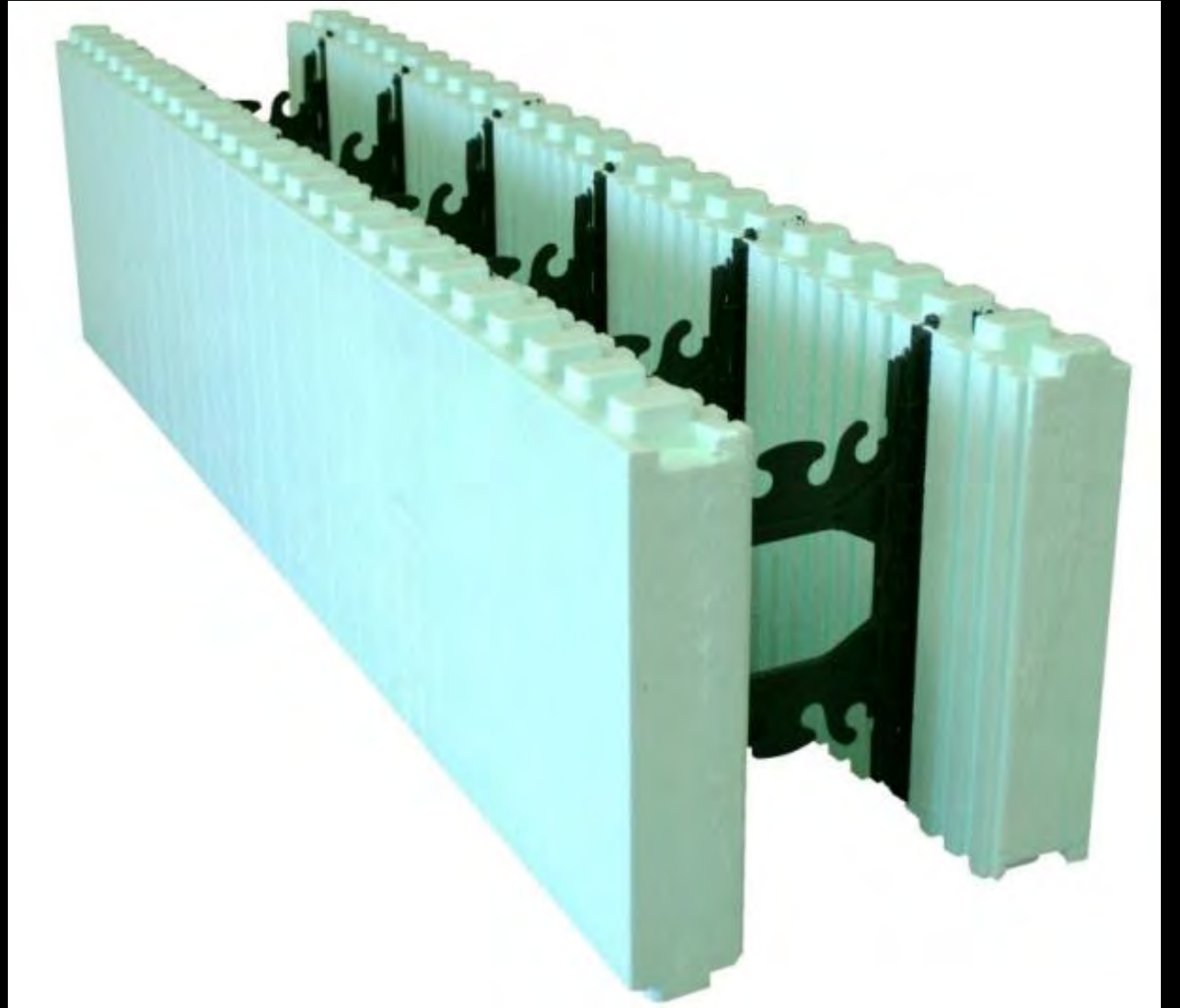
lessons learned thus far.

icfpanels.com

helixrebar.com



Insulated Concrete Forms (ICFs). The (almost) perfect wall.

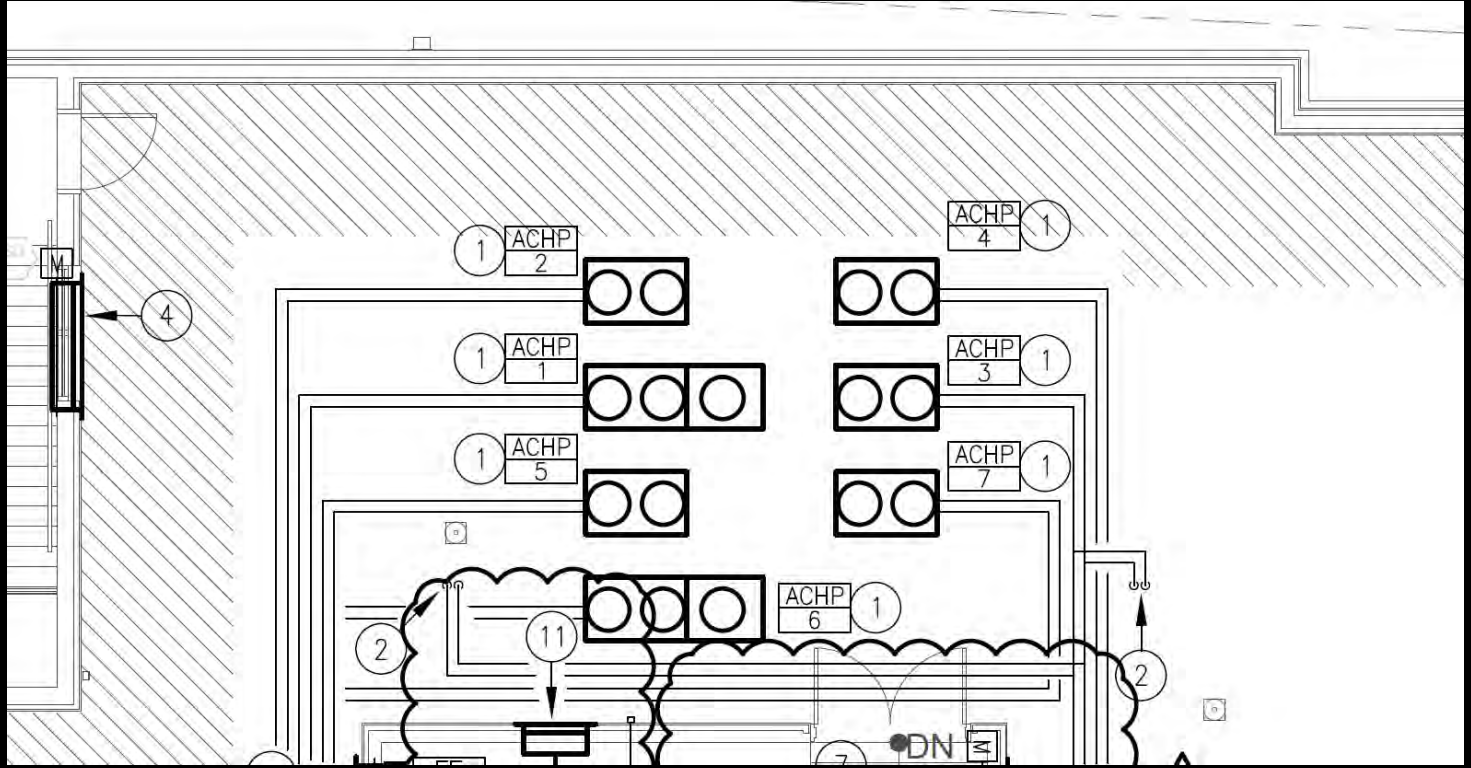












AIR-COOLED HEAT PUMP CONDENSING UNIT SCHEDULE

UNIT NO.	SERVICE	MODEL NO.	COOLING			HEATING			ELECTRICAL O VOLTS/PH/HZ
			CAPACITY MBH	PROPOSED EFFICIENCY	CODE MIN. EFFICIENCY	CAPACITY MBH	PROPOSED EFFICIENCY	CODE MIN. EFFICIENCY	
ACHP-1	UNITS A & R	RXYQ216TTJU	206	11.7 EER	10.6 EER	231	3.65 COP	3.2 COP	208/3/60
ACHP-2	UNITS B,C & Q	RXYQ216TTJU	206	11.7 EER	10.6 EER	231	3.65 COP	3.2 COP	208/3/60
ACHP-3	UNITS P & N	RXYQ144TTJU	138	11.5 EER	10.6 EER	154	3.72 COP	3.2 COP	208/3/60
ACHP-4	UNITS D,E, & H	RXYQ192TTJU	184	12.3 EER	10.6 EER	206	3.6 COP	3.2 COP	208/3/60
ACHP-5	UNITS F & G	RXYQ168TTJU	160	10.6 EER	10.6 EER	180	3.49 COP	3.2 COP	208/3/60
ACHP-6	UNITS J & M	RXYQ216TTJU	206	11.7 EER	10.6 EER	231	3.65 COP	3.2 COP	208/3/60
ACHP-7	UNITS K & L	RXYQ144TTJU	138	11.5 EER	10.6 EER	154	3.72 COP	3.2 COP	208/3/60
ACHP-8	LOBBY	RZQ24PVJU9	24	XX EER	XX EER	27	XX COP	XX COP	208/1/60

1,262

1,414

NOTES:

1. SELECTIONS BASED ON EQUIPMENT MANUFACTURED BY DAIKIN.
2. RATINGS BASED ON 95 DEG.F AMBIENT TEMPERATURE FOR COOLING
3. RATINGS BASED ON 10 DEG.F AMBIENT TEMPERATURE FOR HEATING
4. PROVIDE REFRIGERANT PIPING, COMPONENTS AND SPECIALTIES, SIZED & INSTALLED AS PER THE MFR'S RECOMMENDATIONS.
5. PROVIDE MFR'S INTELLIGENT TOUCH CONTROLLER WITH TENANT BILLING.

ACCESSORIES:

1. LOW AMBIENT HEATING & COOLING
2. POWER DISCONNECT SWITCH
3. SYSTEM SHALL PROVIDE HEATING
4. UNIT SHALL HAVE INVERTER
5. CONDENSER COIL GUARD.
6. ROOF SUPPORT RAILS WITH



It is the first responsibility of every citizen to question authority.

~ Benjamin Franklin

AIR-COOLED HEAT PUMP CONDENSING UNIT SCHEDULE

UNIT NO.	SERVICE	MODEL NO.	COOLING			HEATING		
			CAPACITY MBH	PROPOSED EFFICIENCY	CODE MIN. EFFICIENCY	CAPACITY MBH	PROPOSED EFFICIENCY	CODE MIN. EFFICIENCY
ACHP-1	UNITS A & R	RXYQ192TTJU	184	12.3 EER	10.6 EER	206	3.6 COP	3.2 COP
ACHP-2	UNITS B,C & Q	RXYQ168TTJU	160	10.6 EER	10.6 EER	180	3.49 COP	3.2 COP
ACHP-3	UNITS D,E, & H	RXYQ168TTJU	160	10.6 EER	10.6 EER	180	3.49 COP	3.2 COP
ACHP-4	UNITS F & G	RXYQ168TTJU	160	10.6 EER	10.6 EER	180	3.49 COP	3.2 COP
ACHP-5	UNITS P & N	RXYQ120TTJU	114	12.1 EER	10.6 EER	129	3.46 COP	3.2 COP
ACHP-6	UNITS J & M	RXYQ192TTJU	184	12.3 EER	10.6 EER	206	3.6 COP	3.2 COP
ACHP-7	UNITS K & L	RXYQ120TTJU	114	12.1 EER	10.6 EER	129	3.46 COP	3.2 COP
ACHP-8	LOBBY	RZQ24PVJU9	24	12.0 EER	XX EER	27	XX COP	3.38 COP

1,100

1,240

NOTES:

1. SELECTIONS BASED ON EQUIPMENT MANUFACTURED BY DAIKIN.
2. RATINGS BASED ON 95 DEG.F AMBIENT TEMPERATURE FOR COOLING
3. RATINGS BASED ON 10 DEG.F AMBIENT TEMPERATURE FOR HEATING
4. PROVIDE REFRIGERANT PIPING, COMPONENTS AND SPECIALTIES, SIZED & INSTALLED AS PER THE MFR'S RECOMMENDATIONS.
5. PROVIDE MFR'S INTELLIGENT TOUCH CONTROLLER WITH TENANT BILLING.

ACCESSORIES:

1. LOW AMBIENT
2. POWER DISCO
3. SYSTEM SHALL
4. UNIT SHALL HA
5. CONDENSER C
6. ROOF SUPPOR

AIR-COOLED HEAT PUMP CONDENSING UNIT SCHEDULE

UNIT NO.	SERVICE	MODEL NO.	COOLING			HEATING		
			CAPACITY MBH	PROPOSED EFFICIENCY	CODE MIN. EFFICIENCY	CAPACITY MBH	PROPOSED EFFICIENCY	CODE MIN. EFFICIENCY
ACHP-1	UNITS A & R	RXYQ192TTJU	184	12.3 EER	10.6 EER	206	3.6 COP	3.2 COP
ACHP-2	UNITS B,C & Q	RXYQ168TTJU	160	10.6 EER	10.6 EER	180	3.49 COP	3.2 COP
ACHP-3	UNITS D,E, & H	RXYQ168TTJU	160	10.6 EER	10.6 EER	180	3.49 COP	3.2 COP
ACHP-4	UNITS F & G	RXYQ168TTJU	160	10.6 EER	10.6 EER	180	3.49 COP	3.2 COP
ACHP-5	UNITS P & N	RXYQ120TTJU	114	12.1 EER	10.6 EER	129	3.46 COP	3.2 COP
ACHP-6	UNITS J & M	RXYQ192TTJU	184	12.3 EER	10.6 EER	206	3.6 COP	3.2 COP
ACHP-7	UNITS K & L	RXYQ120TTJU	114	12.1 EER	10.6 EER	129	3.46 COP	3.2 COP
ACHP-8	LOBBY	RZQ24PVJU9	24	12.0 EER	XX EER	27	XX COP	3.38 COP

1,100 / 1,262

1,240 / 1,454

NOTES:

1. SELECTIONS BASED ON EQUIPMENT MANUFACTURED BY DAIKIN.
2. RATINGS BASED ON 95 DEG.F AMBIENT TEMPERATURE FOR COOLING
3. RATINGS BASED ON 10 DEG.F AMBIENT TEMPERATURE FOR HEATING
4. PROVIDE REFRIGERANT PIPING, COMPONENTS AND SPECIALTIES, SIZED & INSTALLED AS PER THE MFR'S RECOMMENDATIONS.
5. PROVIDE MFR'S INTELLIGENT TOUCH CONTROLLER WITH TENANT BILLING.

ACCESSORIES:

1. LOW AMBIENT
2. POWER DISCO
3. SYSTEM SHALL
4. UNIT SHALL HA
5. CONDENSER C
6. ROOF SUPPOR

AIR-COOLED HEAT PUMP CONDENSING UNIT SCHEDULE

UNIT NO.	SERVICE	MODEL NO.	COOLING			HEATING		
			CAPACITY MBH	PROPOSED EFFICIENCY	CODE MIN. EFFICIENCY	CAPACITY MBH	PROPOSED EFFICIENCY	CODE MIN. EFFICIENCY
ACHP-1	UNITS A & R	RXYQ192TTJU	184	12.3 EER	10.6 EER	206	3.6 COP	3.2 COP
ACHP-2	UNITS B,C & Q	RXYQ168TTJU	160	10.6 EER	10.6 EER	180	3.49 COP	3.2 COP
ACHP-3	UNITS D,E, & H	RXYQ168TTJU	160	10.6 EER	10.6 EER	180	3.49 COP	3.2 COP
ACHP-4	UNITS F & G	RXYQ168TTJU	160	10.6 EER	10.6 EER	180	3.49 COP	3.2 COP
ACHP-5	UNITS P & N	RXYQ120TTJU	114	12.1 EER	10.6 EER	129	3.46 COP	3.2 COP
ACHP-6	UNITS J & M	RXYQ192TTJU	184	12.3 EER	10.6 EER	206	3.6 COP	3.2 COP
ACHP-7	UNITS K & L	RXYQ120TTJU	114	12.1 EER	10.6 EER	129	3.46 COP	3.2 COP
ACHP-8	LOBBY	RZQ24PVJU9	24	12.0 EER	XX EER	27	XX COP	3.38 COP

550 / 1,262

620 / 1,454

NOTES:

1. SELECTIONS BASED ON EQUIPMENT MANUFACTURED BY DAIKIN.
2. RATINGS BASED ON 95 DEG.F AMBIENT TEMPERATURE FOR COOLING
3. RATINGS BASED ON 10 DEG.F AMBIENT TEMPERATURE FOR HEATING
4. PROVIDE REFRIGERANT PIPING, COMPONENTS AND SPECIALTIES, SIZED & INSTALLED AS PER THE MFR'S RECOMMENDATIONS.
5. PROVIDE MFR'S INTELLIGENT TOUCH CONTROLLER WITH TENANT BILLING.

ACCESSORIES:

1. LOW AMBIENT
2. POWER DISCO
3. SYSTEM SHALL
4. UNIT SHALL HA
5. CONDENSER C
6. ROOF SUPPOR

AIR-COOLED HEAT PUMP CONDENSING UNIT SCHEDULE

UNIT NO.	SERVICE	MODEL NO.	COOLING			HEATING		
			CAPACITY MBH	PROPOSED EFFICIENCY	CODE MIN. EFFICIENCY	CAPACITY MBH	PROPOSED EFFICIENCY	CODE MIN. EFFICIENCY
ACHP-1	UNITS A & R	RXYQ192TTJU	184	12.3 EER	10.6 EER	206	3.6 COP	3.2 COP
ACHP-2	UNITS B,C & Q	RXYQ168TTJU	160	10.6 EER	10.6 EER	180	3.49 COP	3.2 COP
ACHP-3	UNITS D,E, & H	RXYQ168TTJU	160	10.6 EER	10.6 EER	180	3.49 COP	3.2 COP
ACHP-4	UNITS F & G	RXYQ168TTJU	160	10.6 EER	10.6 EER	180	3.49 COP	3.2 COP
ACHP-5	UNITS P & N	RXYQ120TTJU	114	12.1 EER	10.6 EER	129	3.46 COP	3.2 COP
ACHP-6	UNITS J & M	RXYQ192TTJU	184	12.3 EER	10.6 EER	206	3.6 COP	3.2 COP
ACHP-7	UNITS K & L	RXYQ120TTJU	114	12.1 EER	10.6 EER	129	3.46 COP	3.2 COP
ACHP-8	LOBBY	RZQ24PVJU9	24	12.0 EER	XX EER	27	XX COP	3.38 COP

225 / 1,262

310 / 1,454

NOTES:

1. SELECTIONS BASED ON EQUIPMENT MANUFACTURED BY DAIKIN.
2. RATINGS BASED ON 95 DEG.F AMBIENT TEMPERATURE FOR COOLING
3. RATINGS BASED ON 10 DEG.F AMBIENT TEMPERATURE FOR HEATING
4. PROVIDE REFRIGERANT PIPING, COMPONENTS AND SPECIALTIES, SIZED & INSTALLED AS PER THE MFR'S RECOMMENDATIONS.
5. PROVIDE MFR'S INTELLIGENT TOUCH CONTROLLER WITH TENANT BILLING.

ACCESSORIES:

1. LOW AMBIENT
2. POWER DISCO
3. SYSTEM SHALL
4. UNIT SHALL HA
5. CONDENSER C
6. ROOF SUPPOR



The Joy of Flex

<http://bit.ly/2wDSHCY>

<http://www.energyvanguard.com/blog/joy-flex>



Post-Occupancy Discoveries

From Data and

Operational Perspectives

“It’s so quiet.”

“It’s so comfortable.”

Thanks.

steve@icfpanels.com

steve@helixrebar.com