



# Mind the Gaps: Post-Occupancy Discoveries from Data and Operational Perspectives

# Government Initiatives to Reduce CO<sub>2</sub>



## New York State Energy Plan



New York State  
Energy Plan



**40%** Reduce greenhouse gas emissions 40% (from 1990 levels) by 2030



**50%** Energy generation from renewable energy sources

## NYC One City Built to Last

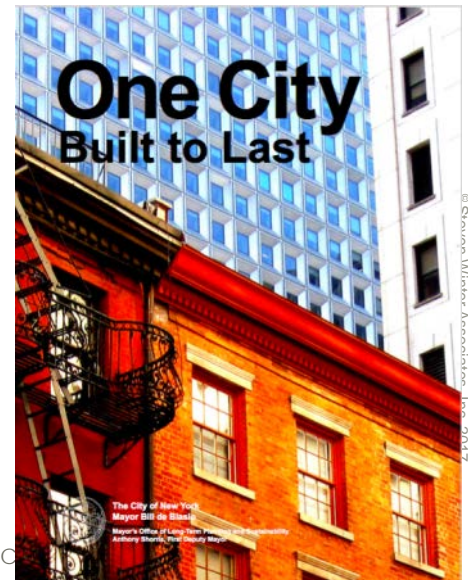


**80x50** Reduce greenhouse gas emissions 80% (from 2005 levels) x 2050

Steven Winter Associates, Inc.

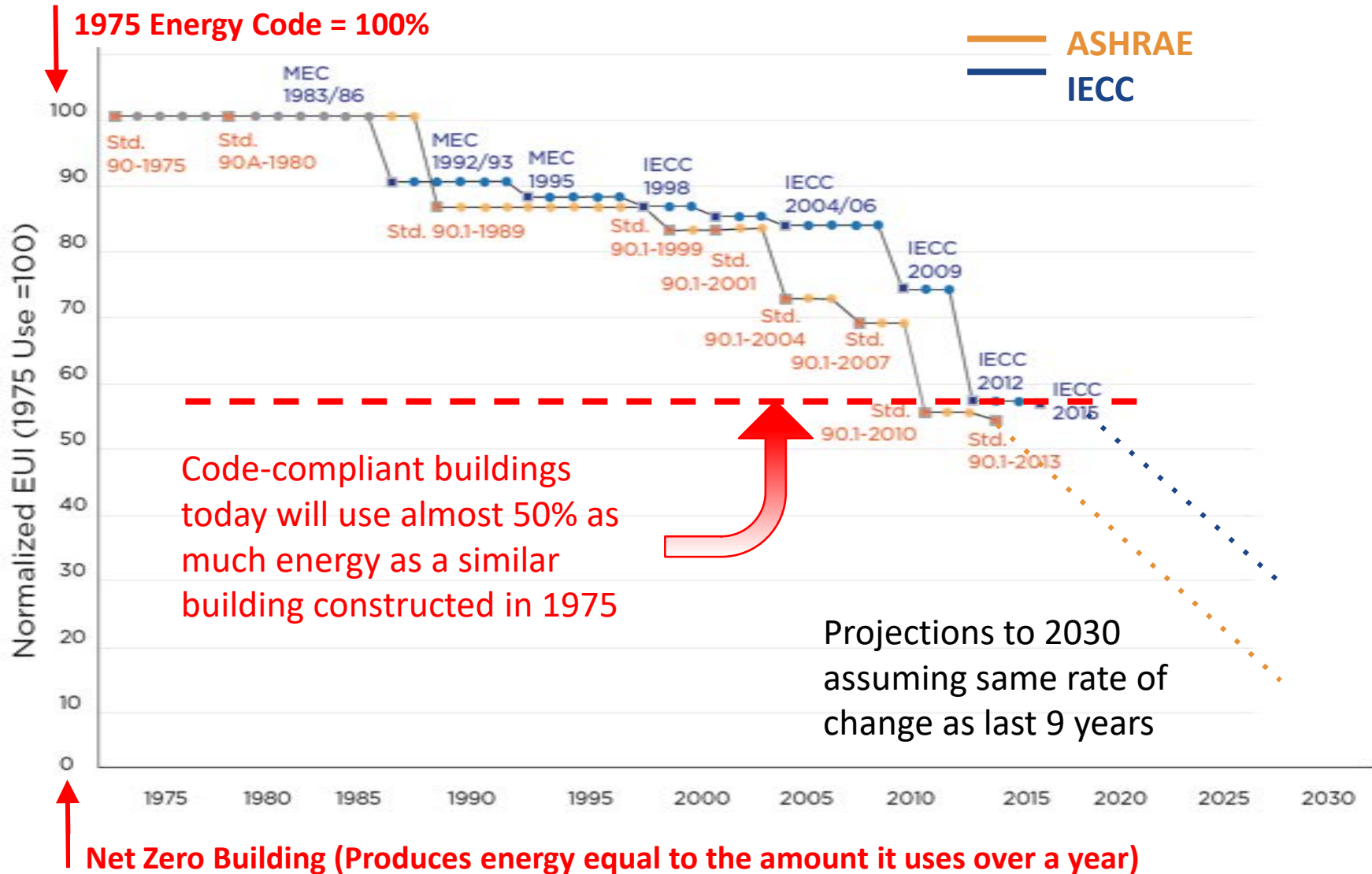
NEW YORK, NY | WASHINGTON, DC | NORWALK, CT

Credit: Urban Green Council





# Efficiencies in the Code?





# Performance Based Standard

- NYC performance standard
  - Intro Bill No. 1629
- NYC LL 84
- DOE Asset Score
  - National standardized tool for assessing energy efficiency of commercial and multifamily residential buildings.

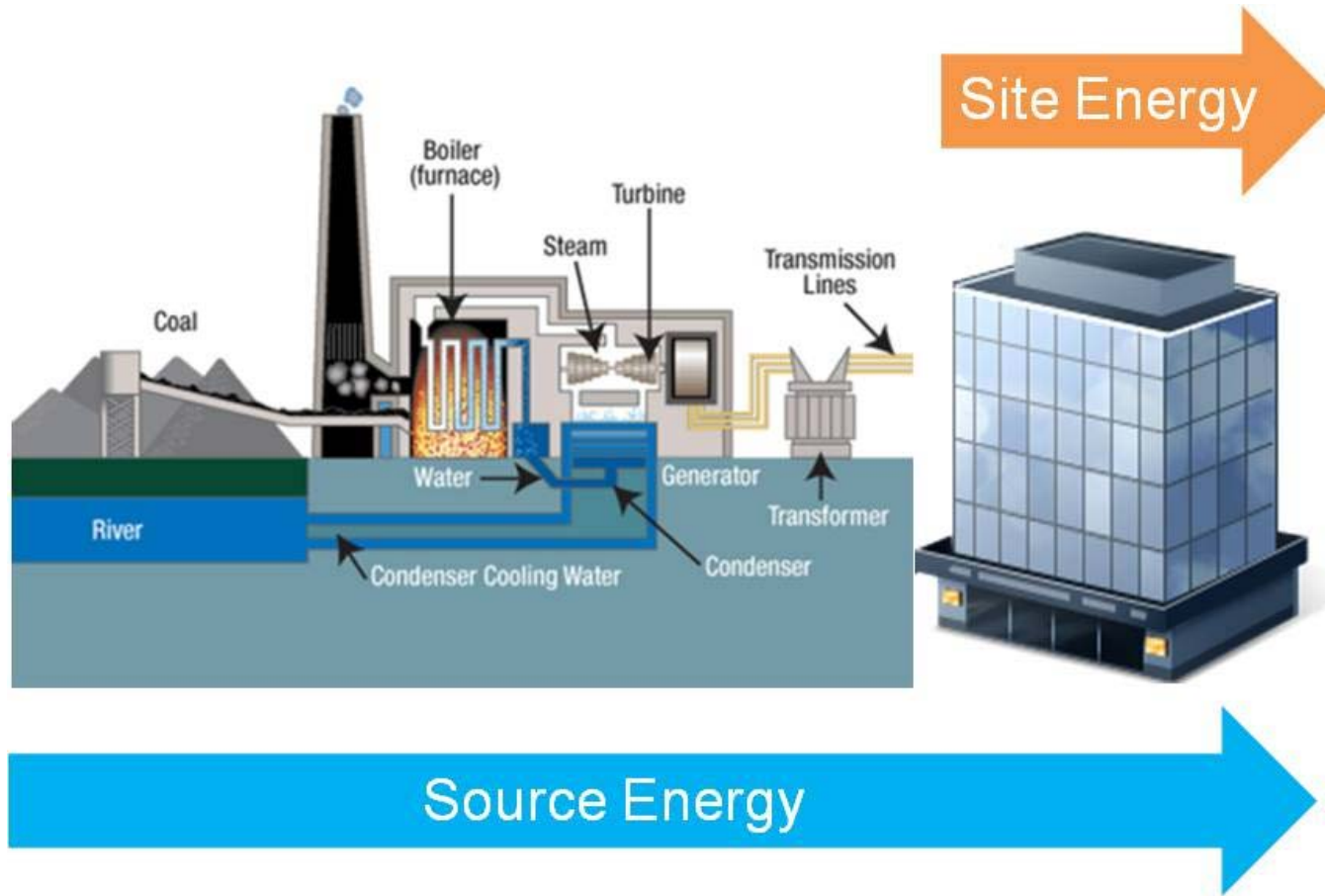


# Key Metrics: New Multifamily

Metric	Unit	Significance
Benchmark (EUI)	kBtu/SF	Whole-building <u>source</u>
Heating	Btu/SF/HDD	Owner-paid
Domestic Hot Water	kBtu/SF	Owner-paid
Fuel	kBtu/SF	Owner-paid
Electric	kWh/SF	Owner-paid
ENERGY STAR Score	1-100	Relative to similar buildings nationwide



# Site vs. Source





# Data Challenges

- Utility bill tracking
  - Master-metered
    - Sub-metered requires assistance from Owner
  - Direct-metered
  - Aggregate data
    - Commercial tenants receive “free” heat from central system, but also supplement their own
- Square footage discrepancies
  - Source: NYC DOF, DOB, OASIS
  - Parking garage
  - Cellar, sub-cellar not counted SF by DOF
  - Commercial space (provide heat, not electricity?)
- Renewables

# ENERGY STAR Multifamily: Shifting Design



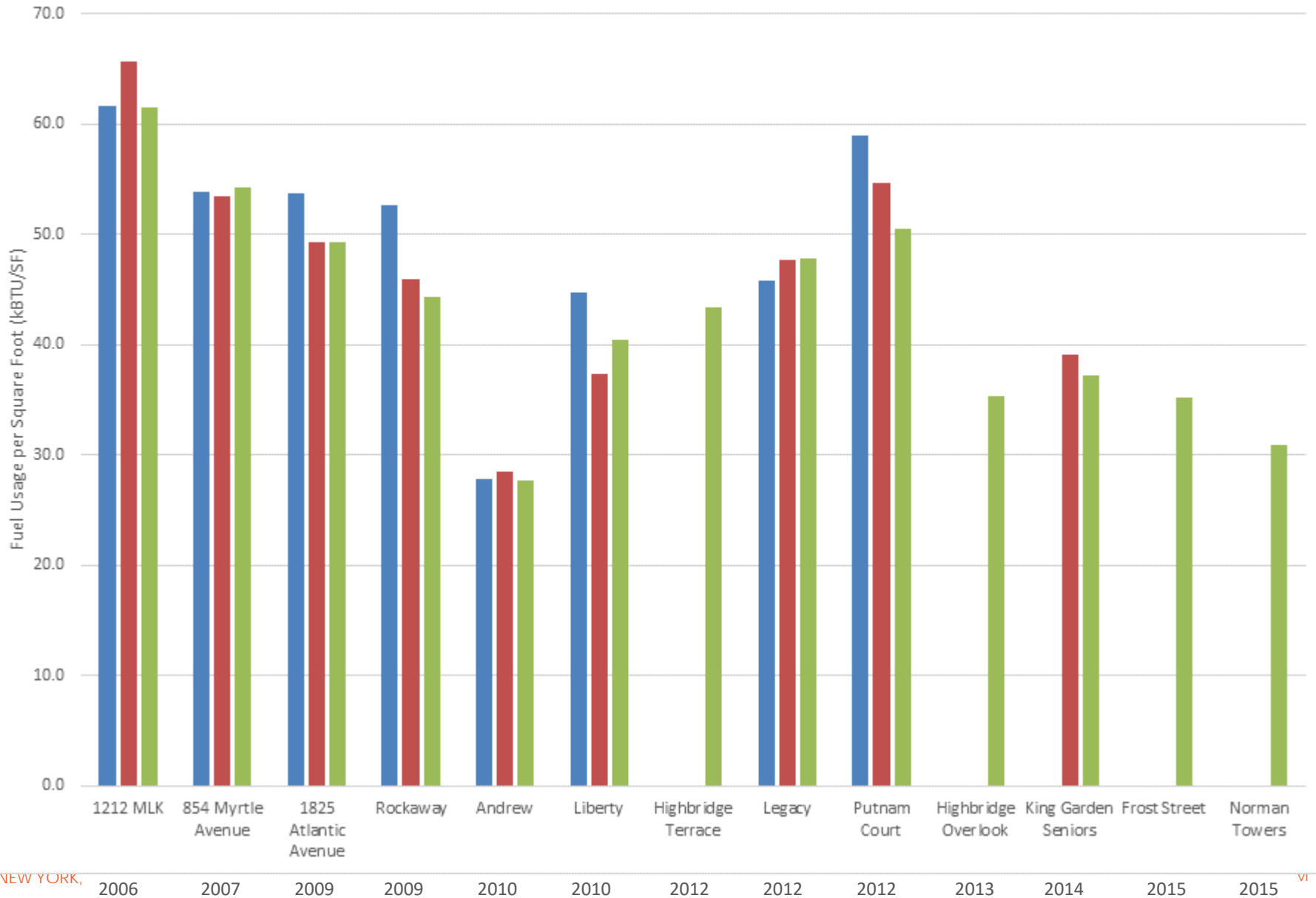
Design	Circa 2007	Now
Walls	Insulation Placement	Reduce Thermal Bridging
Windows	Aluminum vs. Fiberglass	Aluminum vs. uPVC
Ventilation	Code changes	Unitized exhaust/ERV
Heating	Boilers: Condensing?	Boilers vs. VRF
Distribution	Baseboard	PTAC
Cooling	Window vs. Sleeve AC	PTAC vs. Heat Pumps
DHW	Boilers with Indirect Storage	Same + HPWH?
Lighting	Fluorescents and Sensors	LED
On-site Power	Micro-cogeneration	Solar PV/cogen/batteries
Controls	Basic, Local	Smart
Modeling	ASHRAE 90.1 - 2004	ASHRAE 90.1 – 2013

© Steven Winter Associates, Inc. 2017



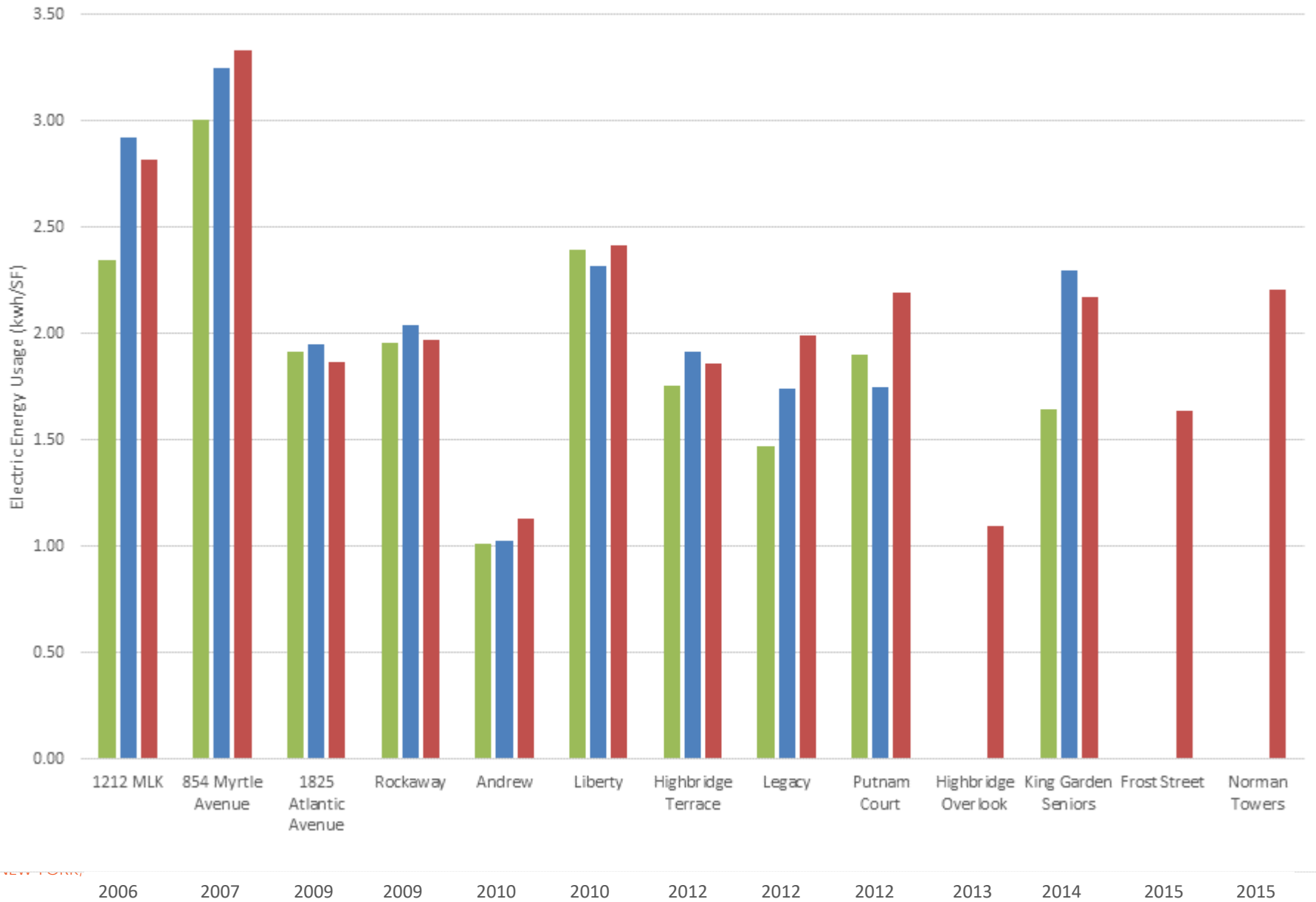
## Comparison of Annual Fuel Usage: Heating & Domestic Hot Water

■ 2014 Fuel EUI   ■ 2015 Fuel EUI   ■ 2016 Fuel EUI

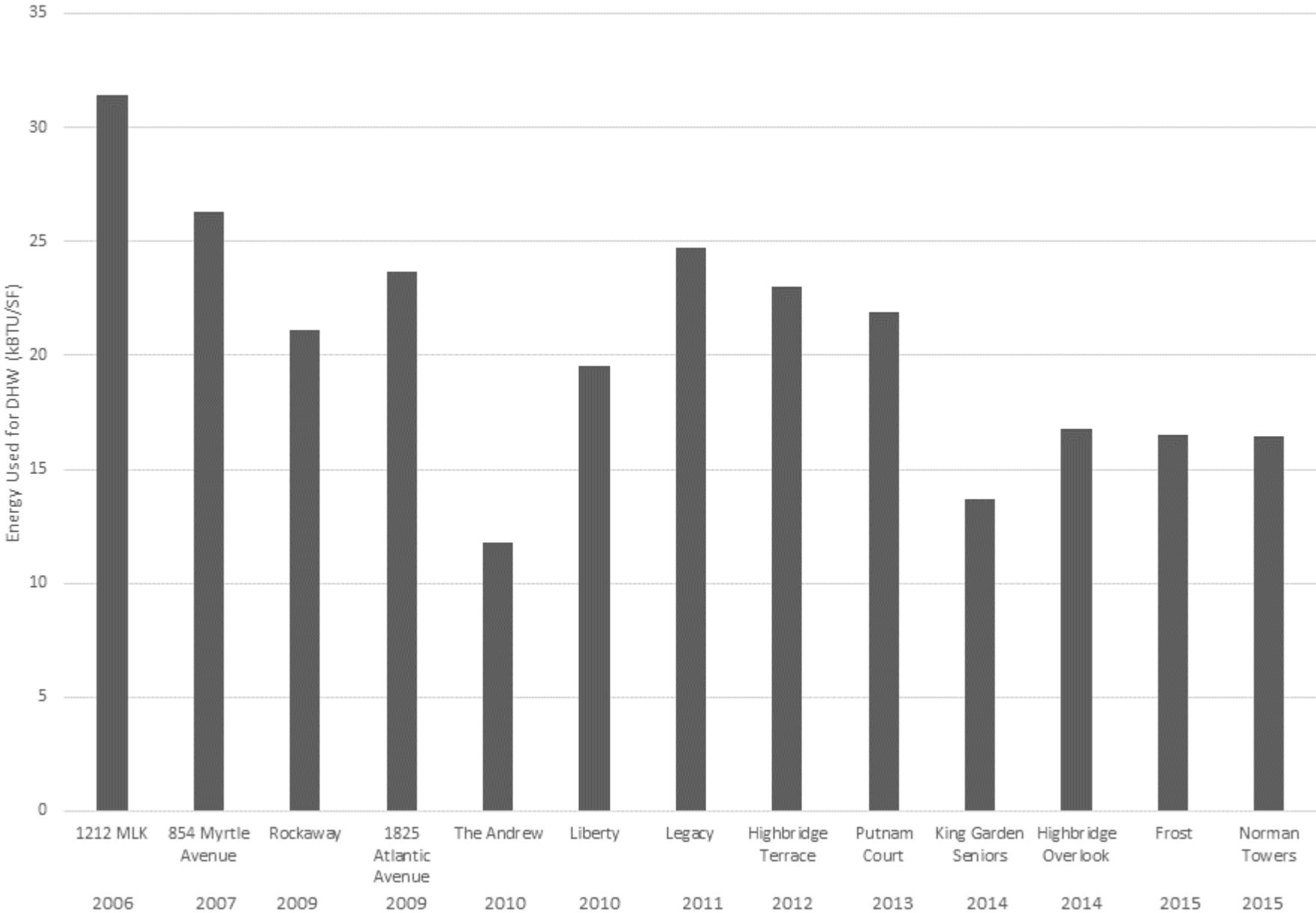


# Comparison of Annual Electric Usage: Owner Paid

2014 Elec 2015 Elec 2016 Elec



### Comparison of Energy Used for Domestic Hot Water Heating

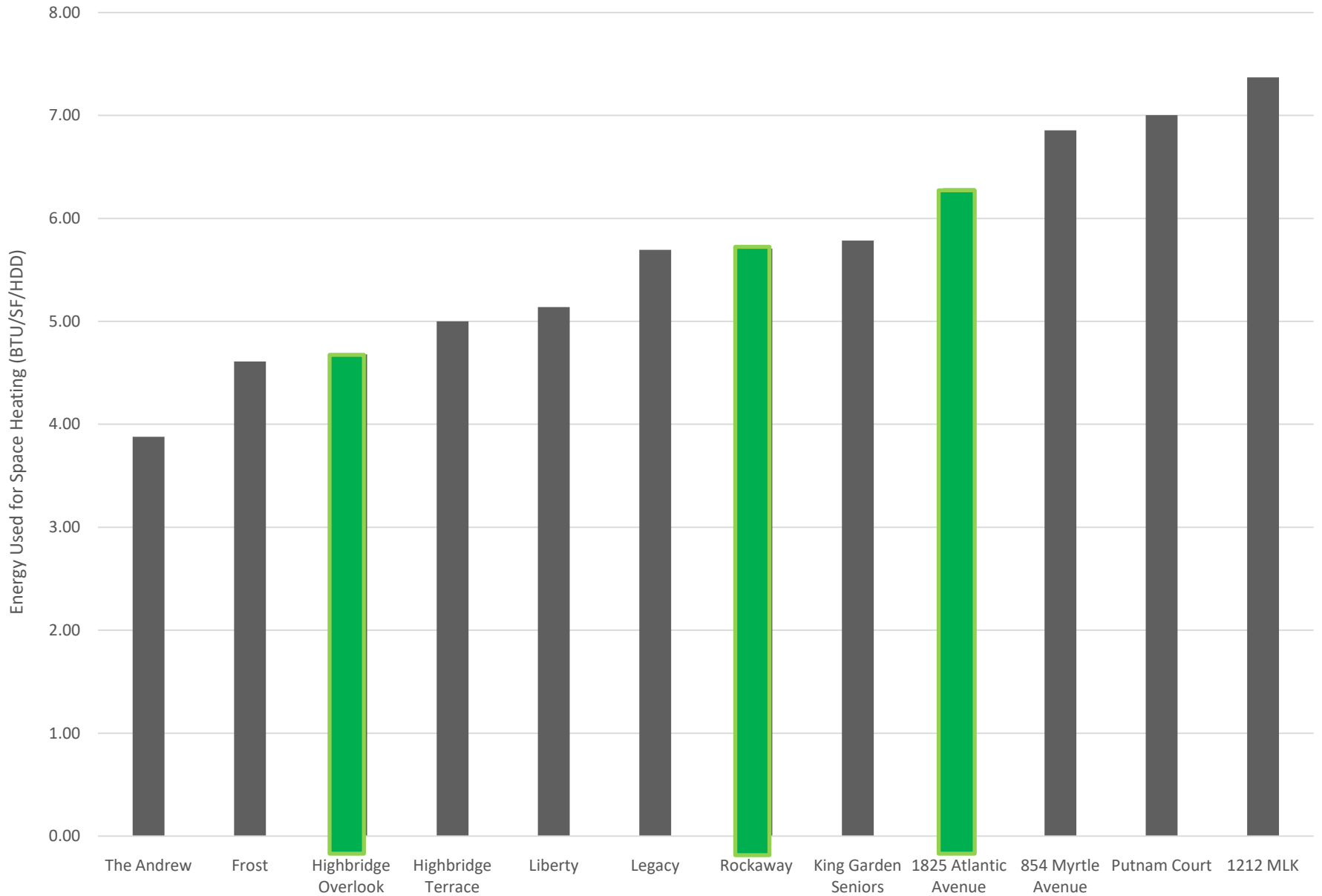




All of these buildings have hot water space heating distribution systems.

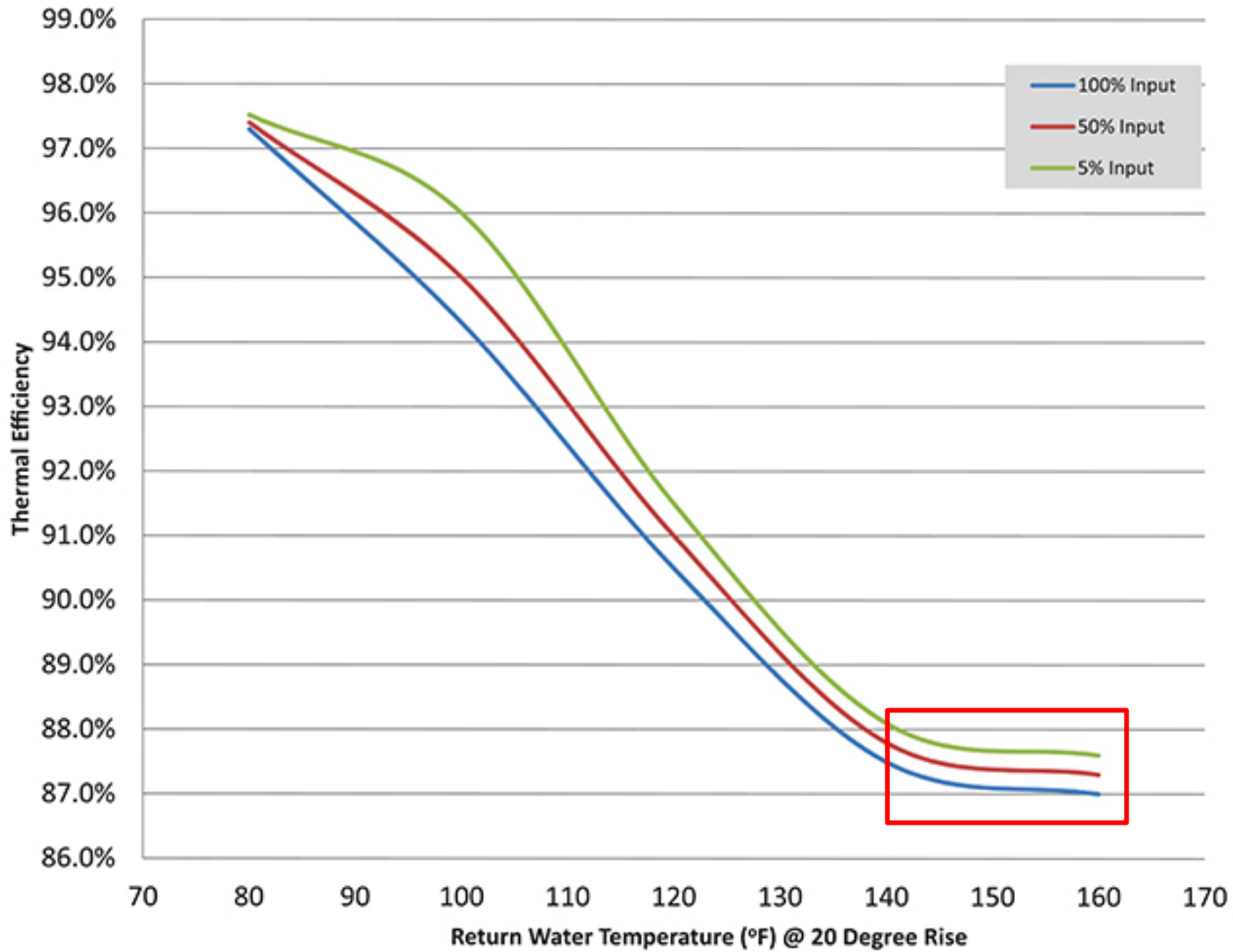
Which buildings do you think have condensing boilers?

# Comparison of Energy Used for Space Heating





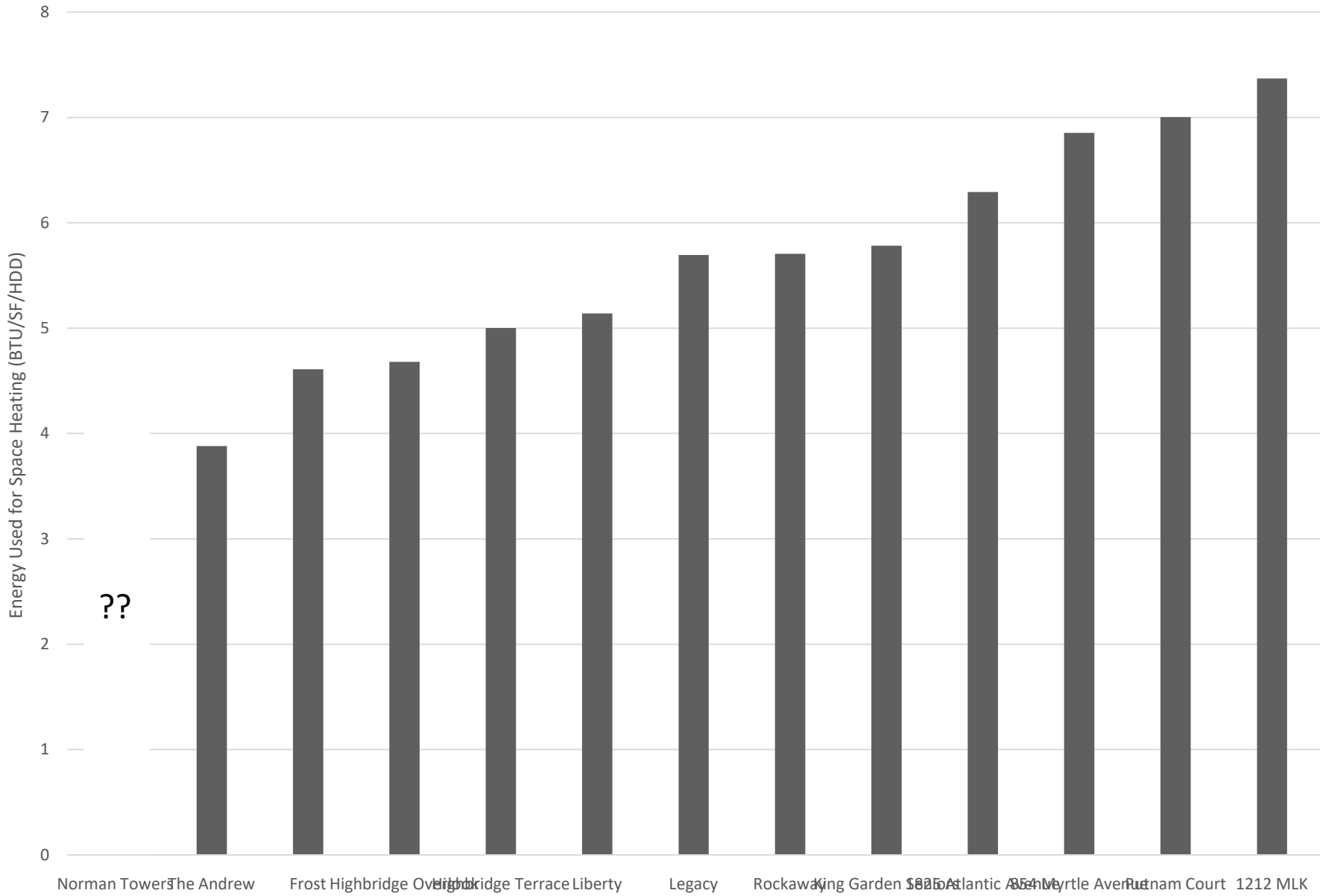
## Thermal Efficiency Curves



Let's add the heat pump project.

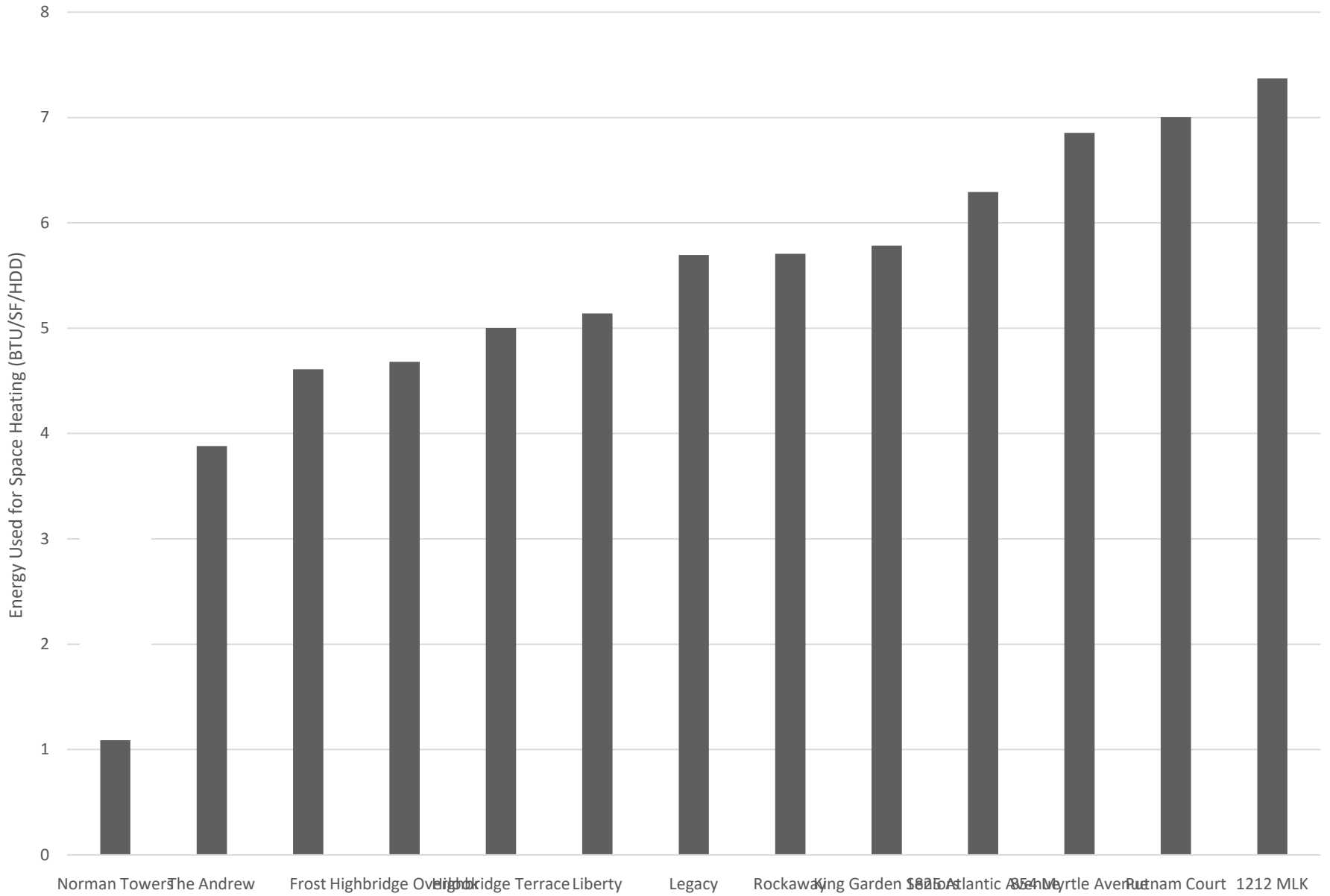


# Comparison of Energy Used for Space Heating

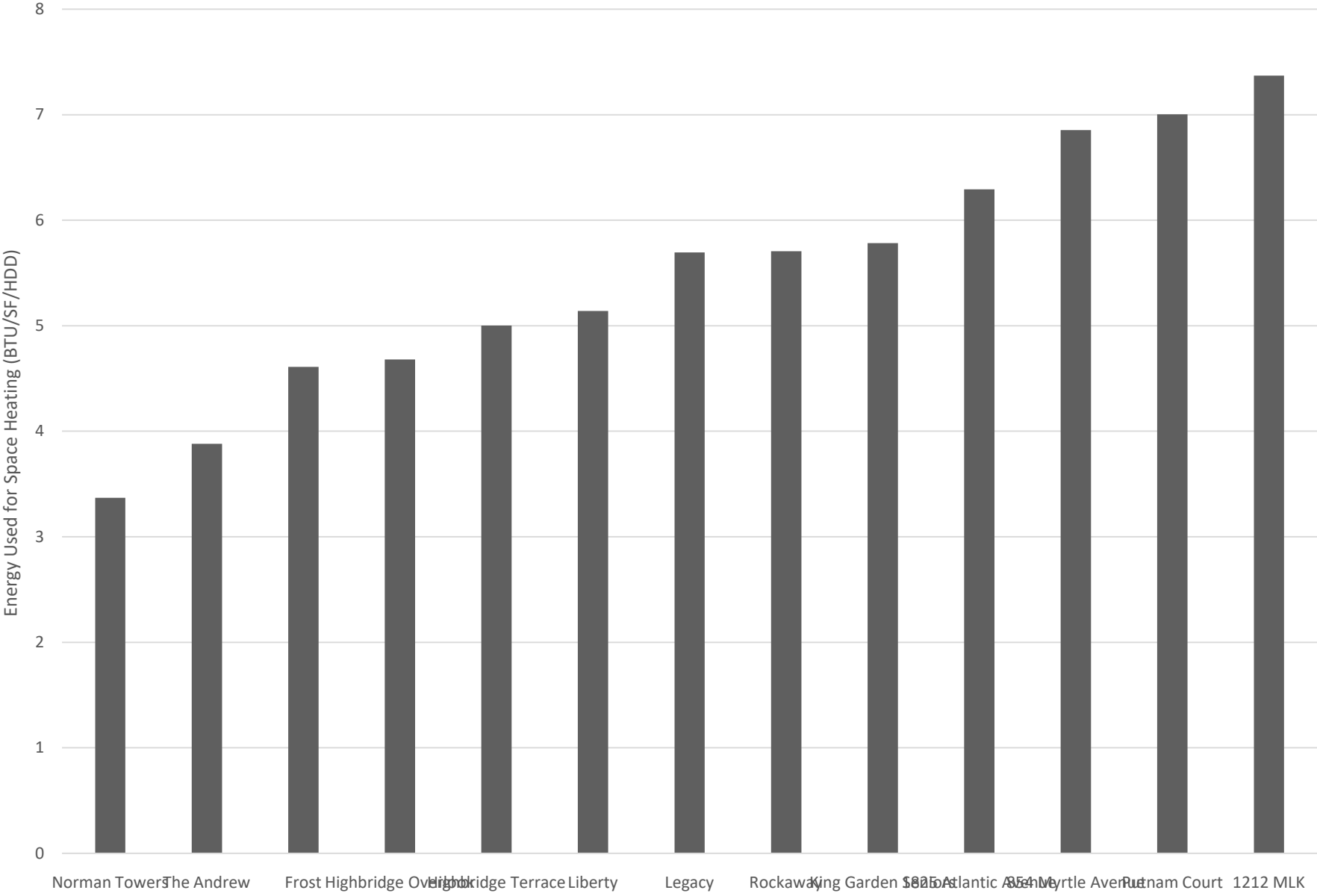




## Comparison of Energy Used for Space Heating - Site



# Comparison of Energy Used for Space Heating - Source

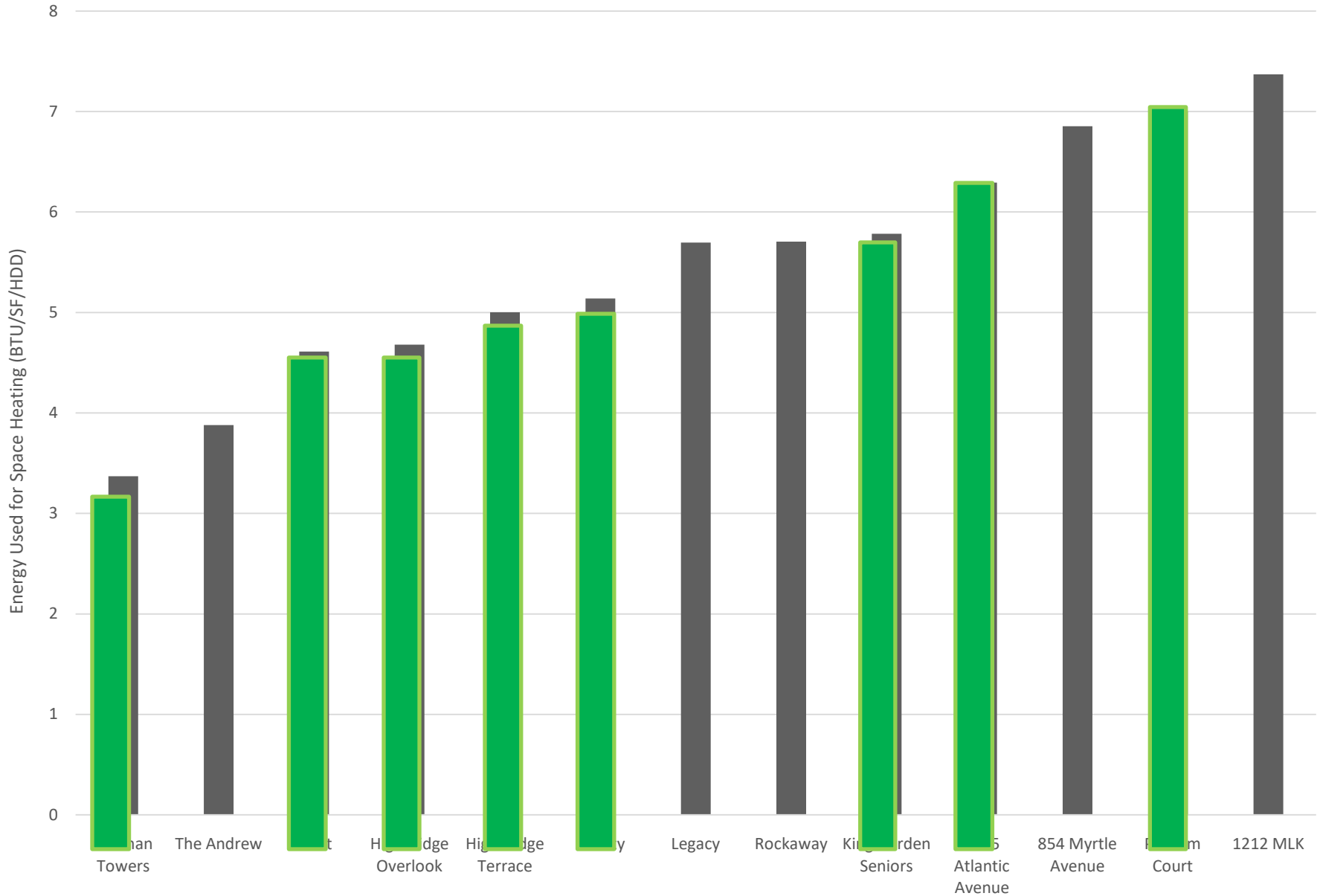




All of these buildings supply fresh air to common area hallways.

Which buildings do you think use ERVs?

# Comparison of Energy Used for Space Heating





All of these buildings utilized different strategies to exceed code requirements for wall insulation:

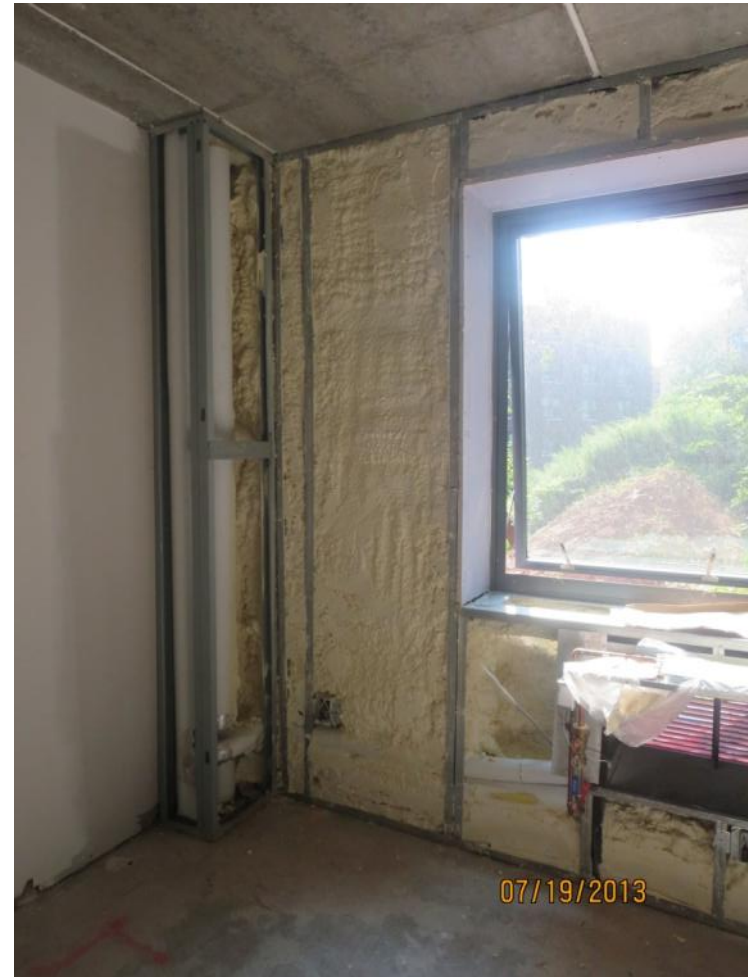
- Interior only
- Exterior only
- Insulated Concrete Form

Which do you think performs best?

Which buildings do you think have interior insulation?



# Inboard Insulation



© Steven Winter Associates, Inc. 2017

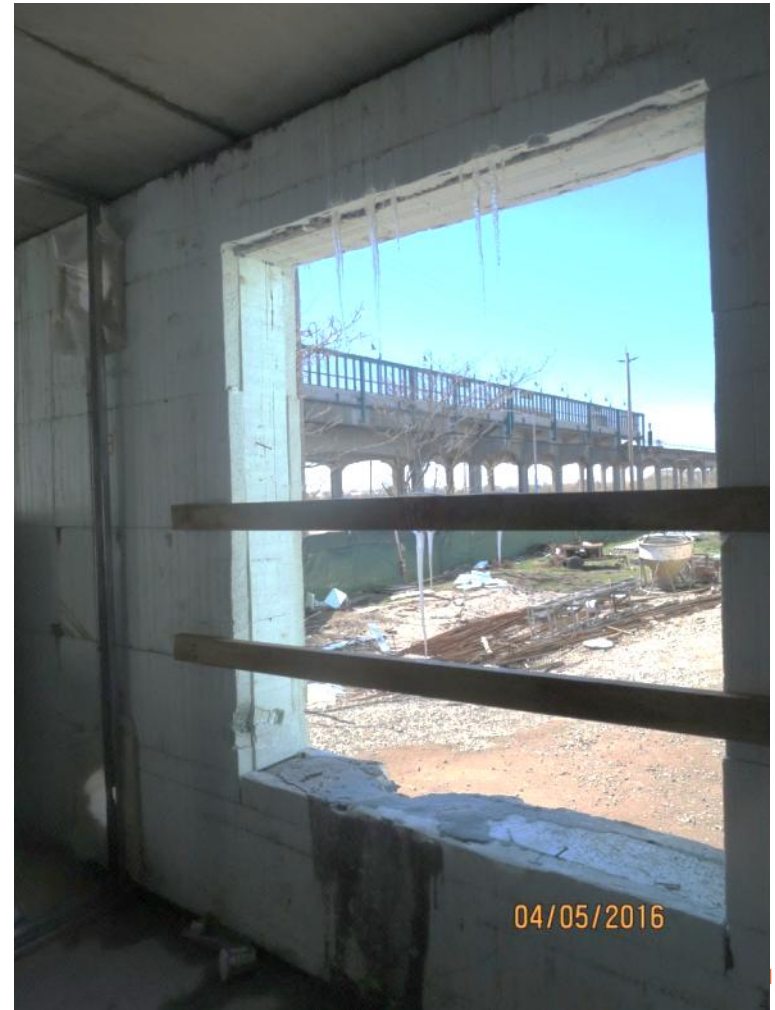


# Outboard Insulation



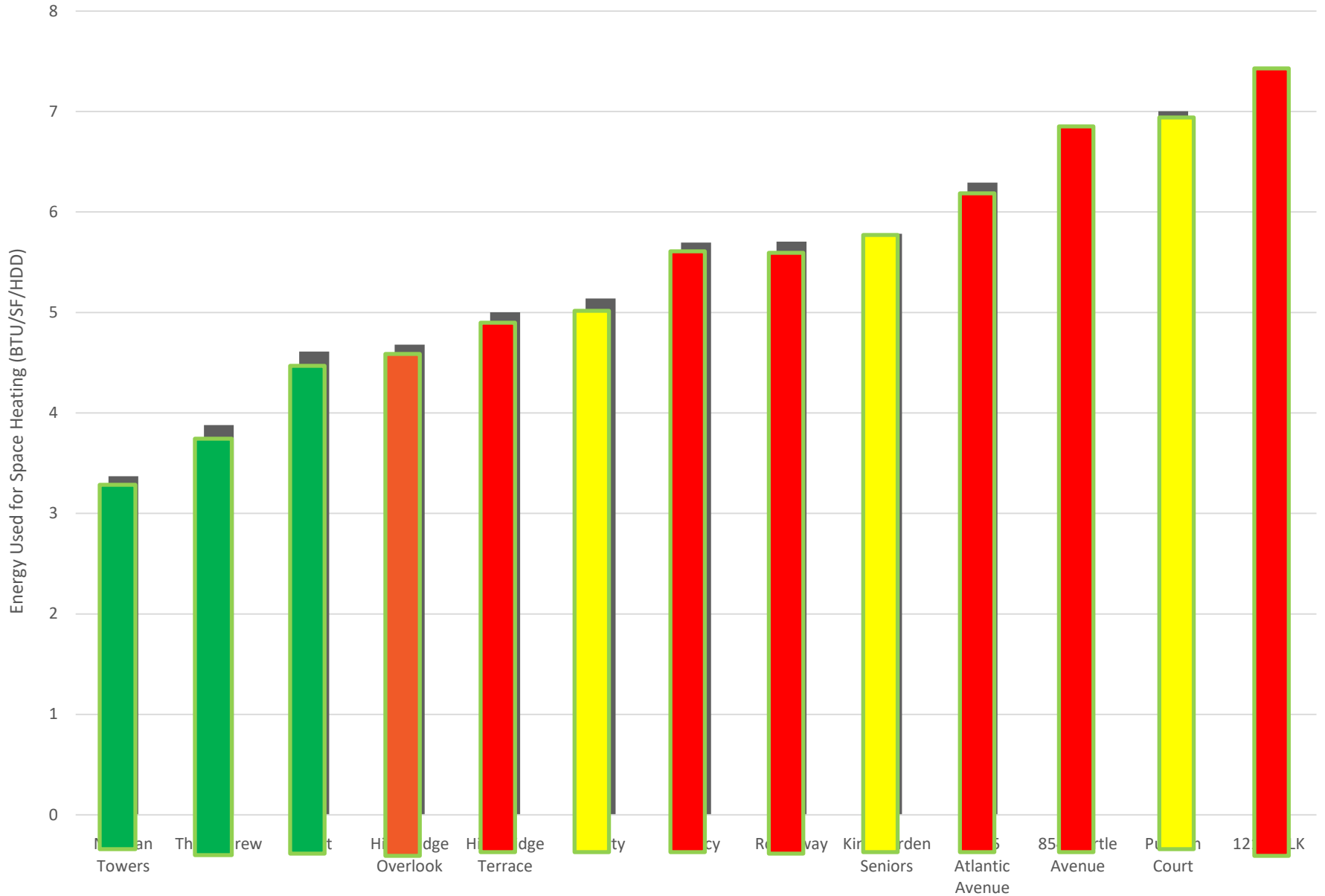


# Insulated Concrete Form





# Comparison of Energy Used for Space Heating

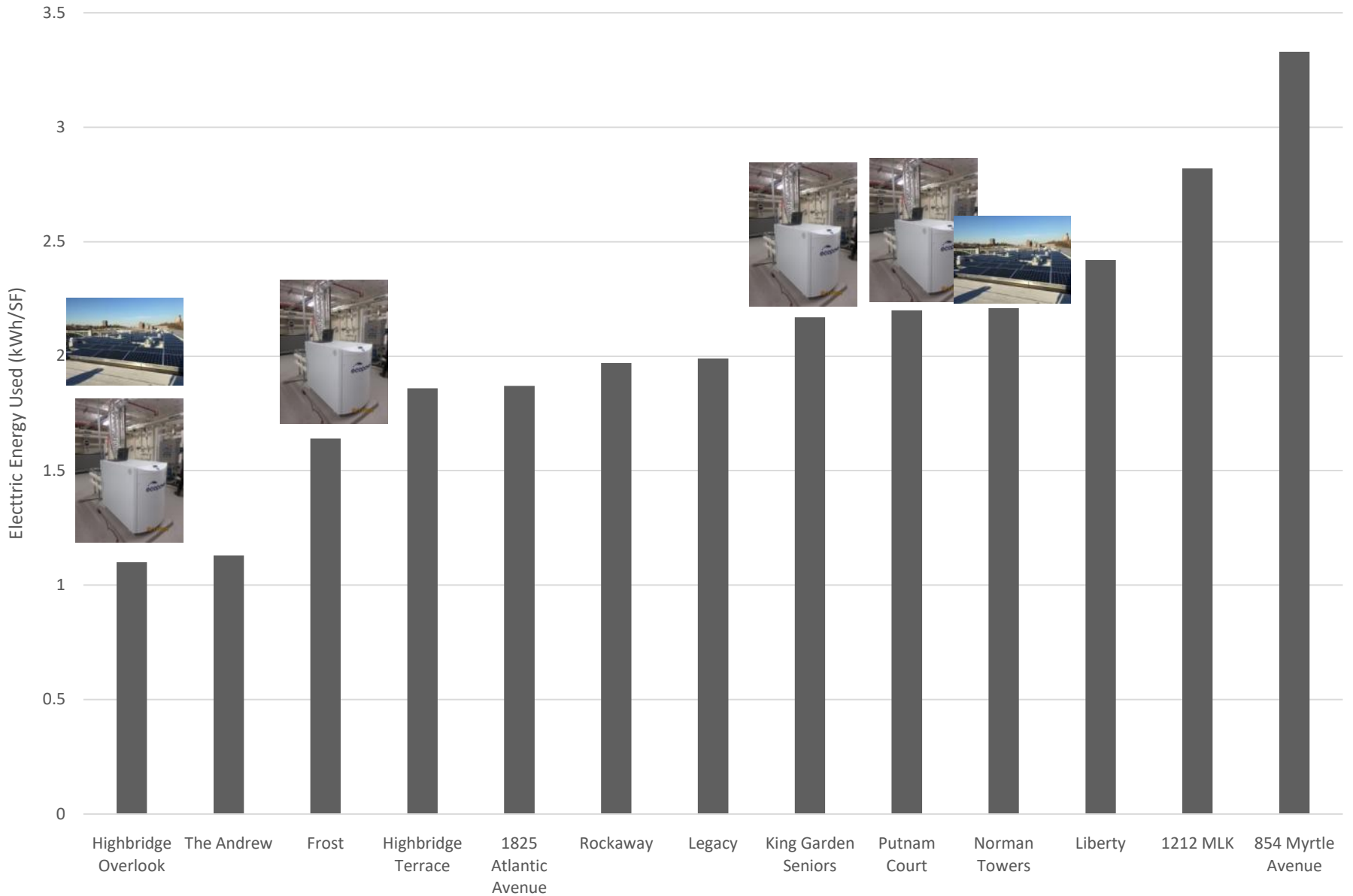




# What about solar and cogen?



## Comparison of Energy Used for Common Area Electric





# Owner Paid Electric: Other Factors

- Apartment Exhaust Ventilation
  - Central versus unitized
- Booster pumps
- Heating circulator pumps



# The Andrew: Keeping it Simple

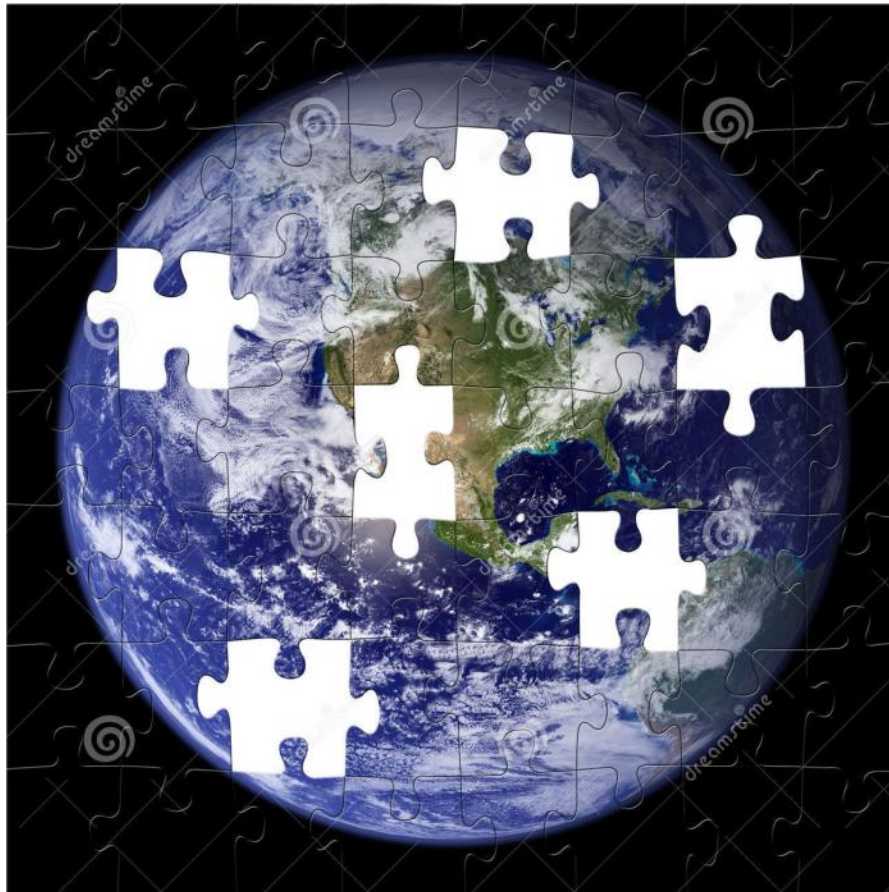
- Unitized exhaust ventilation
- Heating circulators
- Booster pumps





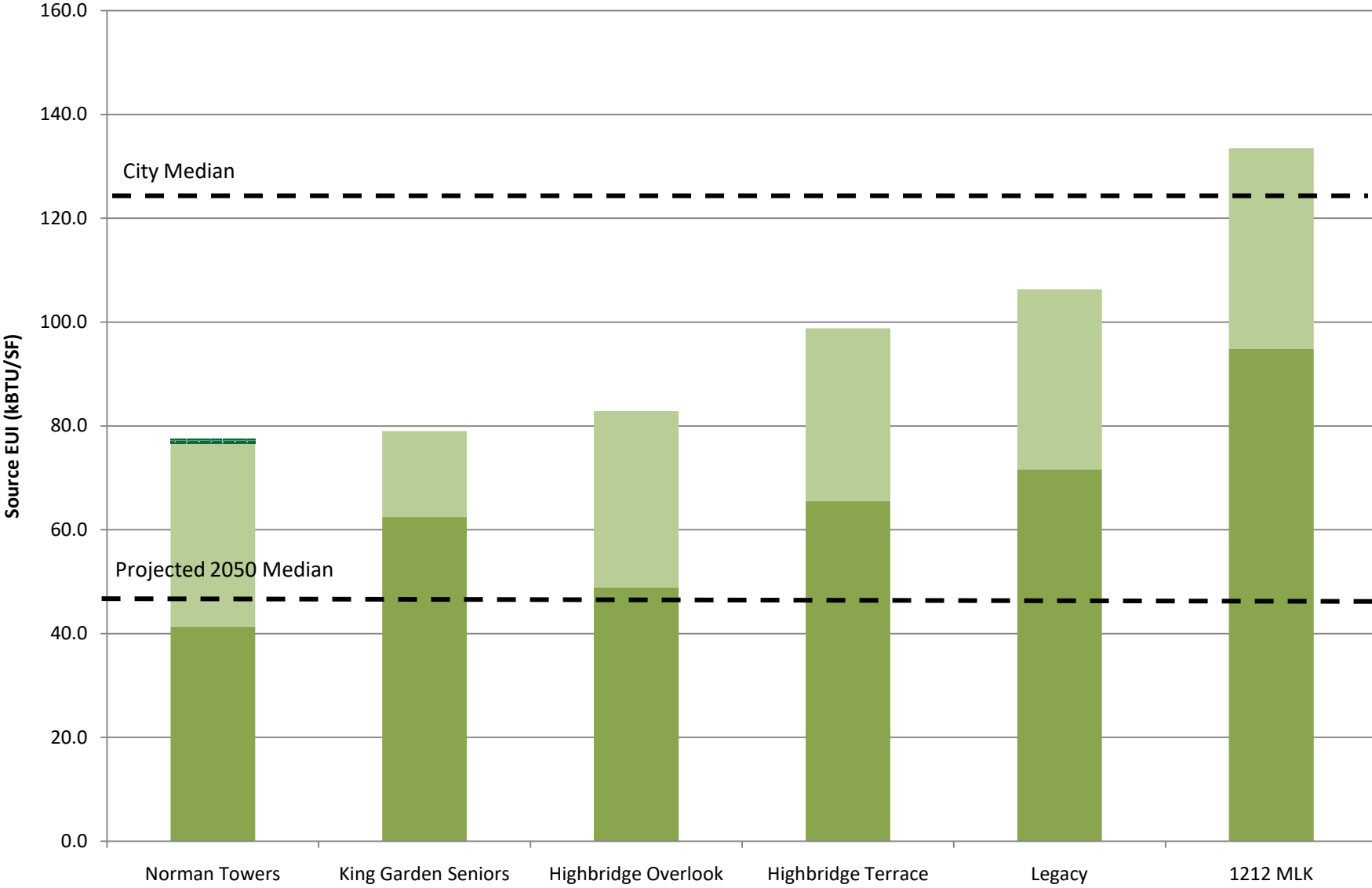
# Whole Building EUI

- What about the rest of these buildings?



# Comparison of Whole Building Source Energy Use

2016 Source EUI Resident Paid Source EUI Solar





# Questions?

**Steven Winter Associates, Inc.**

NEW YORK, NY | WASHINGTON, DC | NORWALK, CT

CALL US 866.676.1972 | [SWINTER.COM](http://SWINTER.COM)