

# WINDSTALK



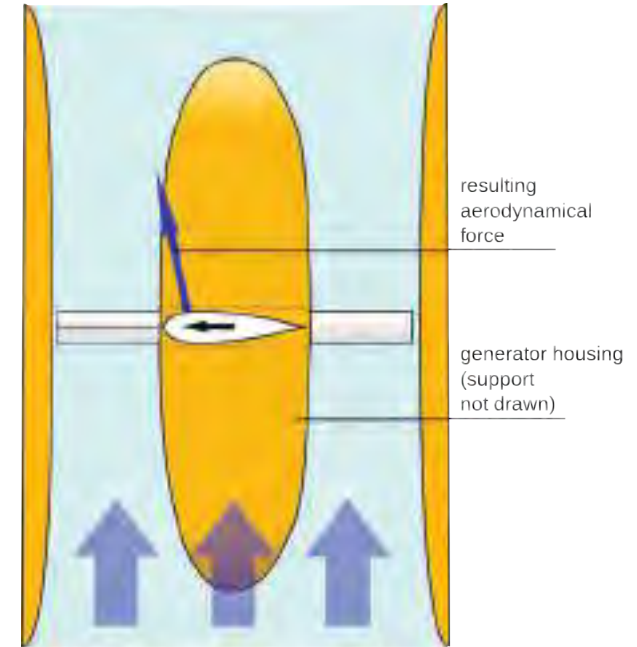
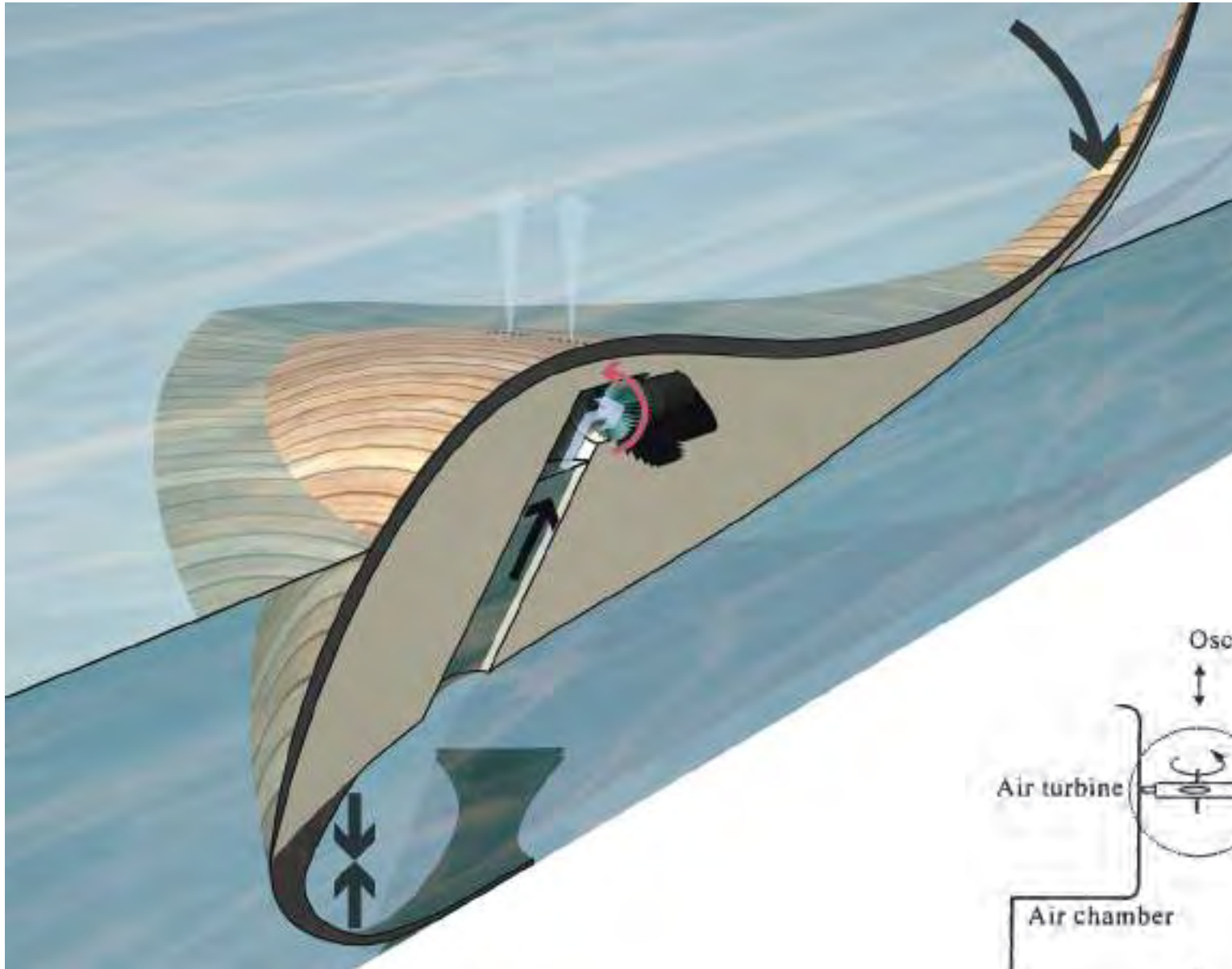
**TEAM:** Concept and Design Atelier dna: Darío Núñez Ameni & Thomas Siegl; Narrative and Poetics Gabrielle Jesiolowski; Structure and Engineering; ISSE Innovative Structural and Specialty Engineering: Radhi Majmudar PE;

Ecology and Renewable Energy Strategy eDesign Dynamics: Ian Lipsky

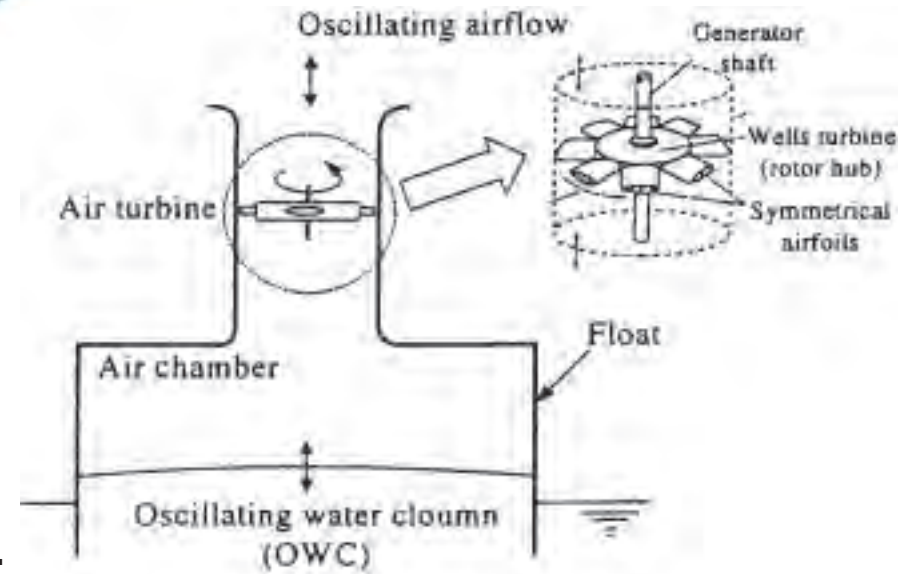
**ENERGY TECHNOLOGY:** piezoelectric discs, linear alternator

**ANNUAL CAPACITY:** 20,000 MWh

[A submission to the 2010 Land Art Generator Initiative competition for United Arab Emirates](#)



Wells Turbine, Schematic Diagram



Oscillating Water Column uses Wells Type Turbine that maintains rotational energy despite the direction of air or liquid flow.



# OSCILLATING PLATFORMS

**TEAM:** Felix Cheong

**ENERGY TECHNOLOGY:** wind sails, oscillating water column, Wells turbine

**ANNUAL CAPACITY:** 34,000 MWh

A submission to the 2014 Land Art Generator Initiative competition for Copenhagen

# GOLDEN ROOTS

TEAM: Ronny Zschörper, Franziska Adler

ENERGY TECHNOLOGY: biomass, piezoelectric paving

ANNUAL CAPACITY: 52 MWh

A submission to the 2014 Land Art Generator Initiative competition for Copenhagen





**TEAM**

Christina Vannelli, Liz Davidson,  
Matthew Madigan

**TEAM LOCATION**

Hamilton (ON), Canada

**ENERGY TECHNOLOGIES**

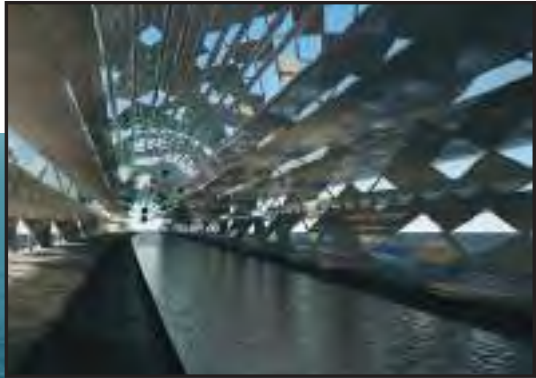
point absorber wave energy  
converter (similar to CETO™  
by Carnegie Wave Energy)

**ANNUAL CAPACITY**

16,000 MWh

**Catching the Wave**

A submission to the 2016 Land Art Generator Initiative design competition for Santa Monica



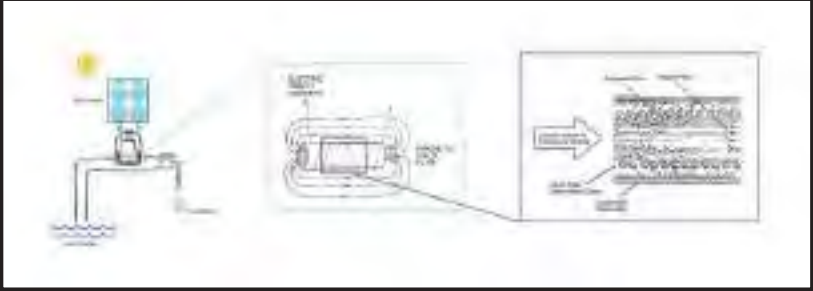
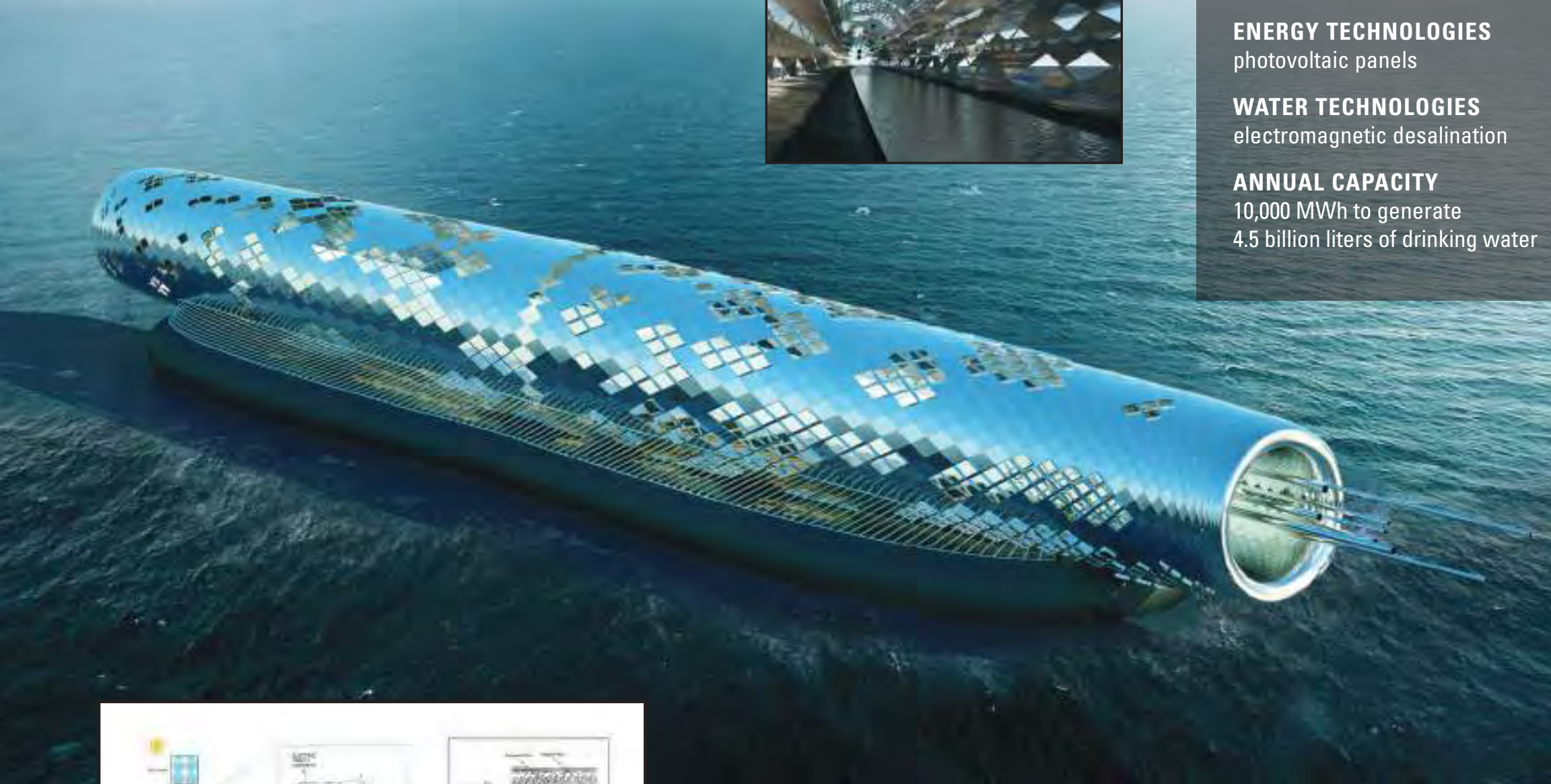
**TEAM**  
Khalili Engineers

**TEAM LOCATION**  
Vancouver, Canada

**ENERGY TECHNOLOGIES**  
photovoltaic panels

**WATER TECHNOLOGIES**  
electromagnetic desalination

**ANNUAL CAPACITY**  
10,000 MWh to generate  
4.5 billion liters of drinking water

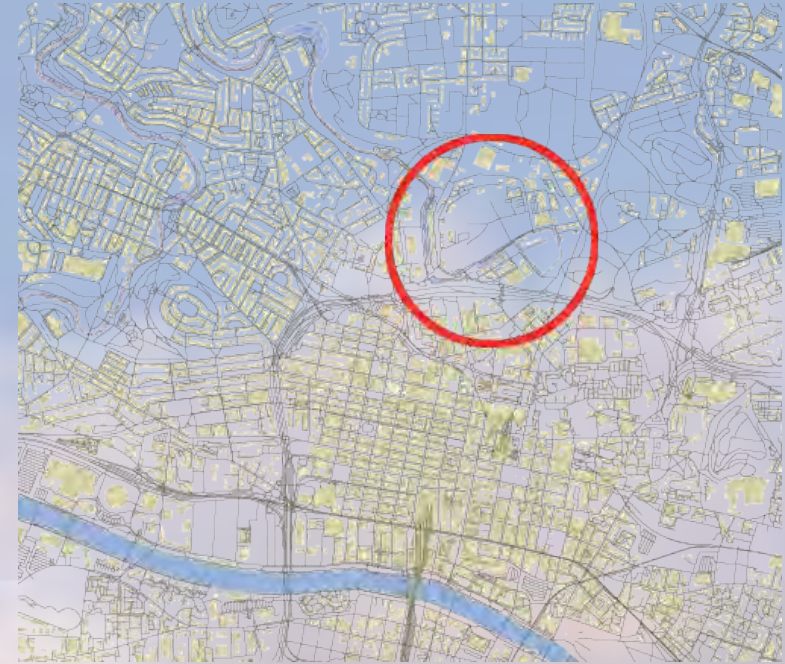


# The Pipe

# LAGI GLASGOW

The consortium including Glasgow City Council, Scottish Canals, igloo Regeneration, with the assistance of ecoartscotland has brought together overseas teams who participated in past LAGI open competitions (UAE 2010; NYC 2012; Copenhagen 2014) to work with Glasgow-based teams in order to research and develop LAGI artwork concept proposals for Port Dundas. The site has a focus for urban regeneration with a strong creative dimension.

LAGI Glasgow formed part of Glasgow's Green Year 2015 and continued through 2016 as Glasgow's contribution to Scotland's Year of Innovation, Architecture, and Design—engaging local communities as well as those interested in art and innovation in renewable energy.



# WIND FOREST



**TEAM** Dalziel + Scullion, Qmulus Ltd., Yeadon Space Agency, and ZM Architecture

**ENERGY TECHNOLOGIES** Vortex Bladeless™ wind turbines **ANNUAL CAPACITY** 900 MWh



# ART + ENERGY CAMP (2015)

People think Homewood is a bad place to be, but the kids and builders are making a solar panel artwork so that people will not judge Homewood because of some other stuff that happens. We are opening a door of opportunity for Homewood and as a community we are trying to make Homewood a better place.

**Terrell Williams (age 11)**

“Renaissance Gate” means to me that once you walk through it you will come into a completely new Homewood. A new community without fear, without poverty, and without violence.

**Jordan Blackwell (age 14)**



ART+ENERGY CAMP 2015 WAS A PROJECT OF  
Land Art Generator Initiative  
Conservation Consultants, Inc.  
Homewood Renaissance Association

WITH GENEROUS SUPPORT FROM  
Heinz Endowments  
Google Community Grants Foundation  
RK Mellon Foundation  
Three Rivers Community Foundation

# ART + ENERGY CAMP

4–6 weeks

Field trips

Lessons in energy science

Lessons in energy justice +  
energy democracy

Design process

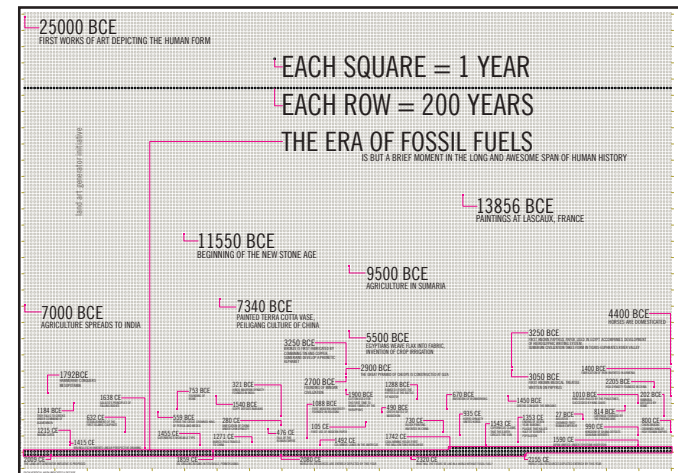
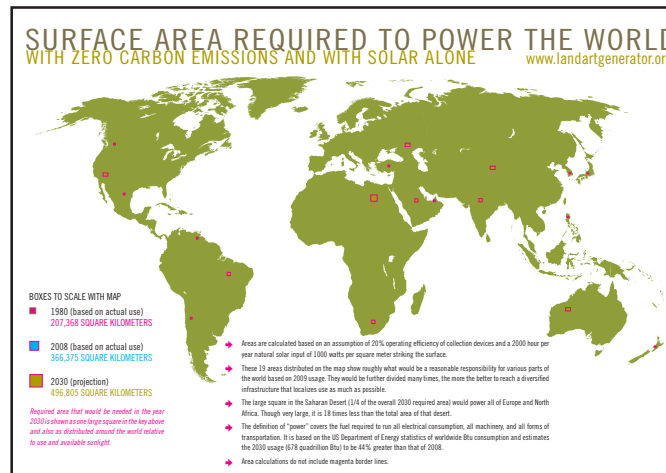
Guest presentations

Hands on with construction of a  
renewable energy artwork

Final outcome:  
a built solar sculpture



# Selected LAGI Educational Materials



# Economic Benefit of Public Art

## **Olafur Eliasson, NYC Waterfalls** *(not a Land Art Generator)*

\$15.5 million to install. According to the NYC Economic Development Corporation Brought an estimated \$53 million in incremental spending over four months



# LAND ART GENERATOR INITIATIVE LEADERSHIP

Elizabeth Monoian & Robert Ferry

LAGI Founding Directors

[lagi@landartgenerator.org](mailto:lagi@landartgenerator.org)

[www.landartgenerator.org](http://www.landartgenerator.org)

+1 412 996 4906

**Todd Bartholf**, Owner and Renewable Energy Consultant at Todd Bartholf Consulting (formerly at WSP Parsons Brinckerhoff, CH2M, and Winrock)  
*LAGI Board Member*

**Julianne Boden**, Communications Manager at SolarReserve  
*LAGI Board Member*

**Christopher Choa**, Architect/Urban Planner, AECOM, appointed advisor to the Mayor of London's Infrastructure Delivery Board  
*LAGI Board Member*

**Robert Ferry**, Architect, LEED AP BD+C  
*LAGI Founding Director and Board Chair*

**Deborah Hosking**, Artist  
*LAGI Board Secretary (founding member)*

**Tim Mollette-Parks**, Landscape Architect, Associate Principal at Mithun  
*LAGI Board Member*

**Elizabeth Monoian**, Artist & Designer  
*LAGI Founding Director and CEO*

**Martin J. Pasqualetti**, Professor, School of Geographical Sciences and Urban Planning, Arizona State University. Senior Sustainability Scientist, Julie Ann Wrigley Global Institute of Sustainability. Co-Director, Energy Policy Innovation Council  
*LAGI Board Member*

**Paul Schifino**, Graphic Designer, Owner at Schifino Design  
*LAGI Board Treasurer (founding member)*

**George Riley Thomas II**, Member at Metz Lewis Brodman Must O'Keefe LLC  
*LAGI Board Member*