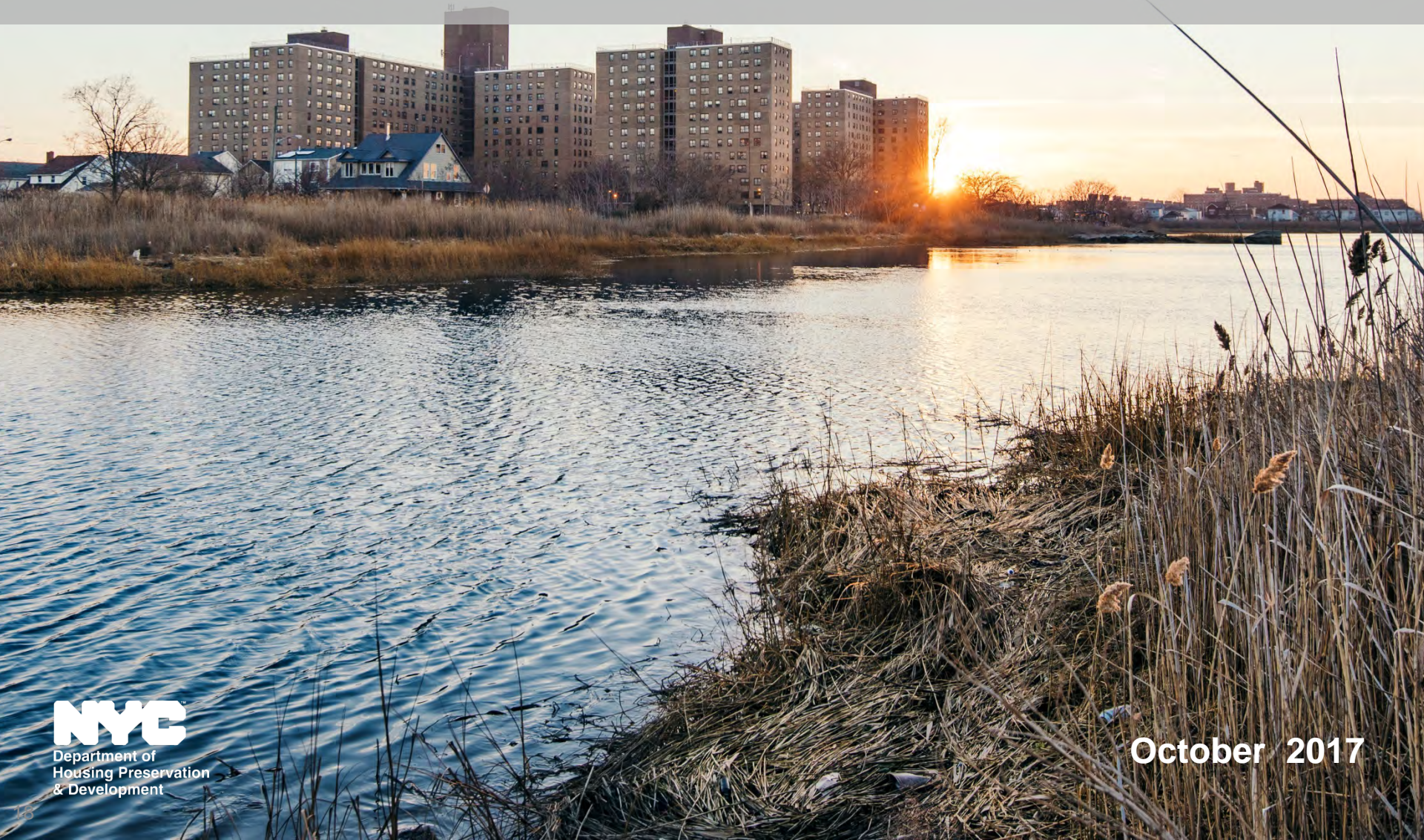


Resilient Edgemere Community Planning Initiative

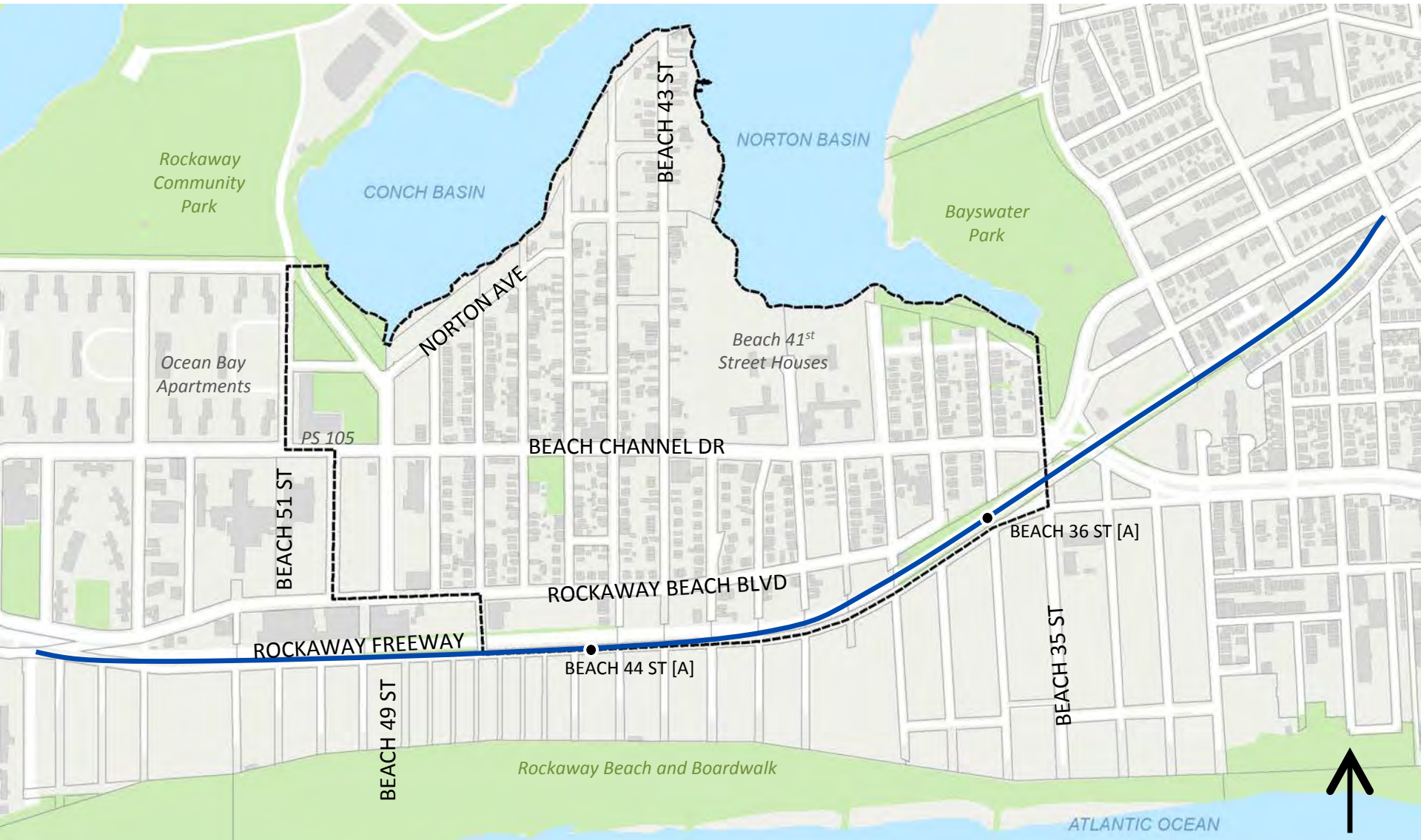


Where: Location

Edgemere is a low-lying waterfront community located in the Eastern Rockaways



Where: Study Area



Why: About the Initiative

A neighborhood facing environmental and financial threats

- Significant damage from Hurricane Sandy inundation
- Regular tidal flooding and sea level rise threaten neighborhood
- Inadequate drainage and street infrastructure
- Many vacant lots and abandoned homes



Why: Existing Conditions



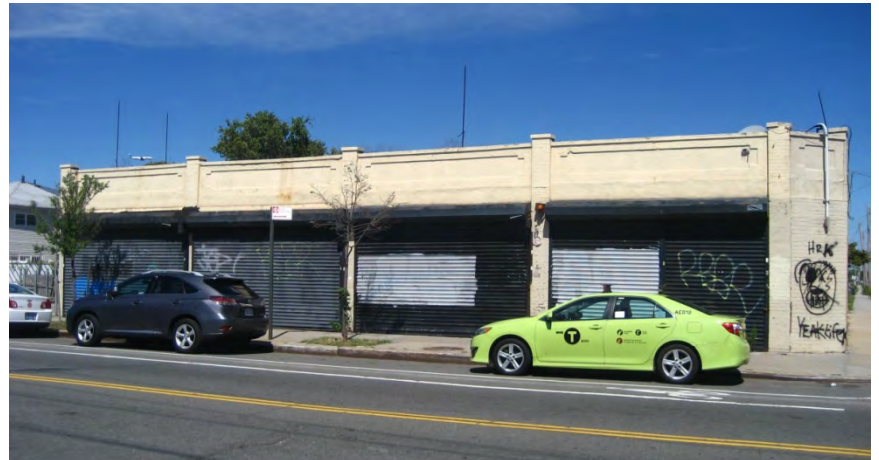
Open space and environment



Transportation



housing



Amenities